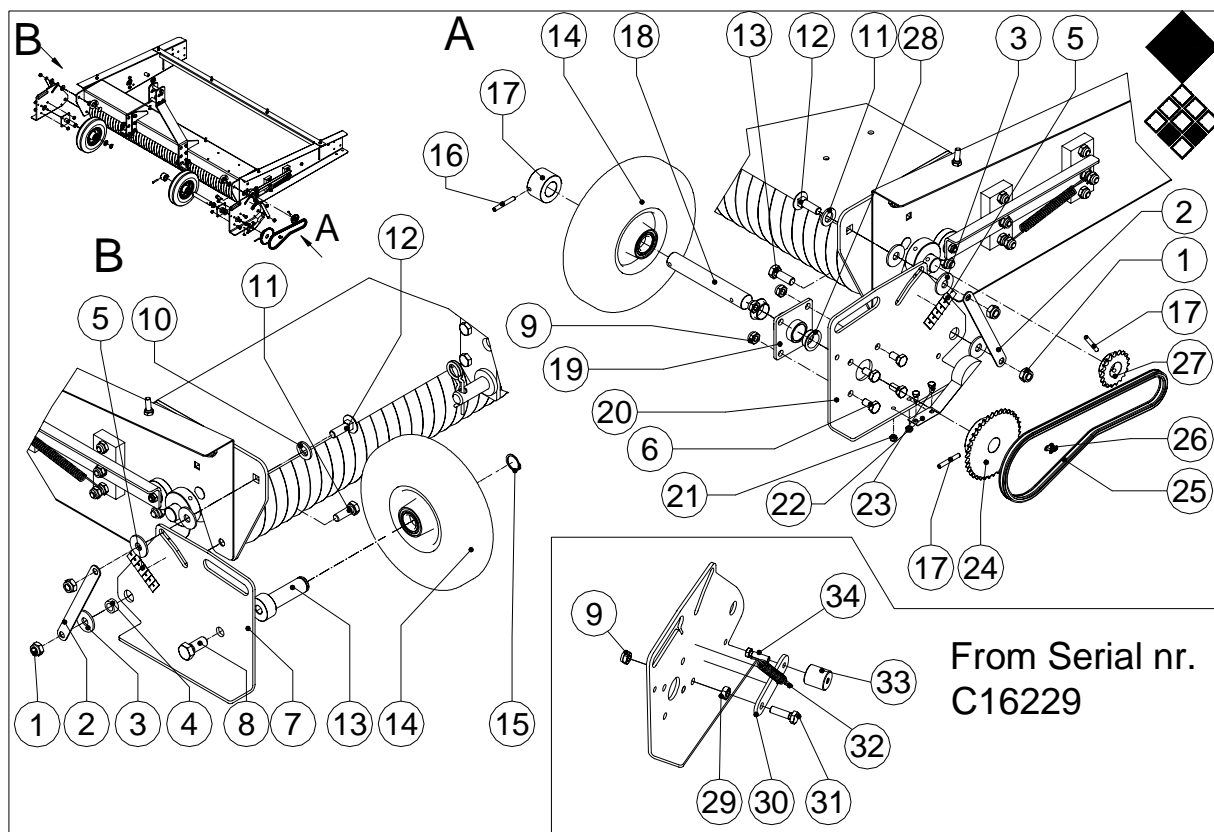


[illegible]





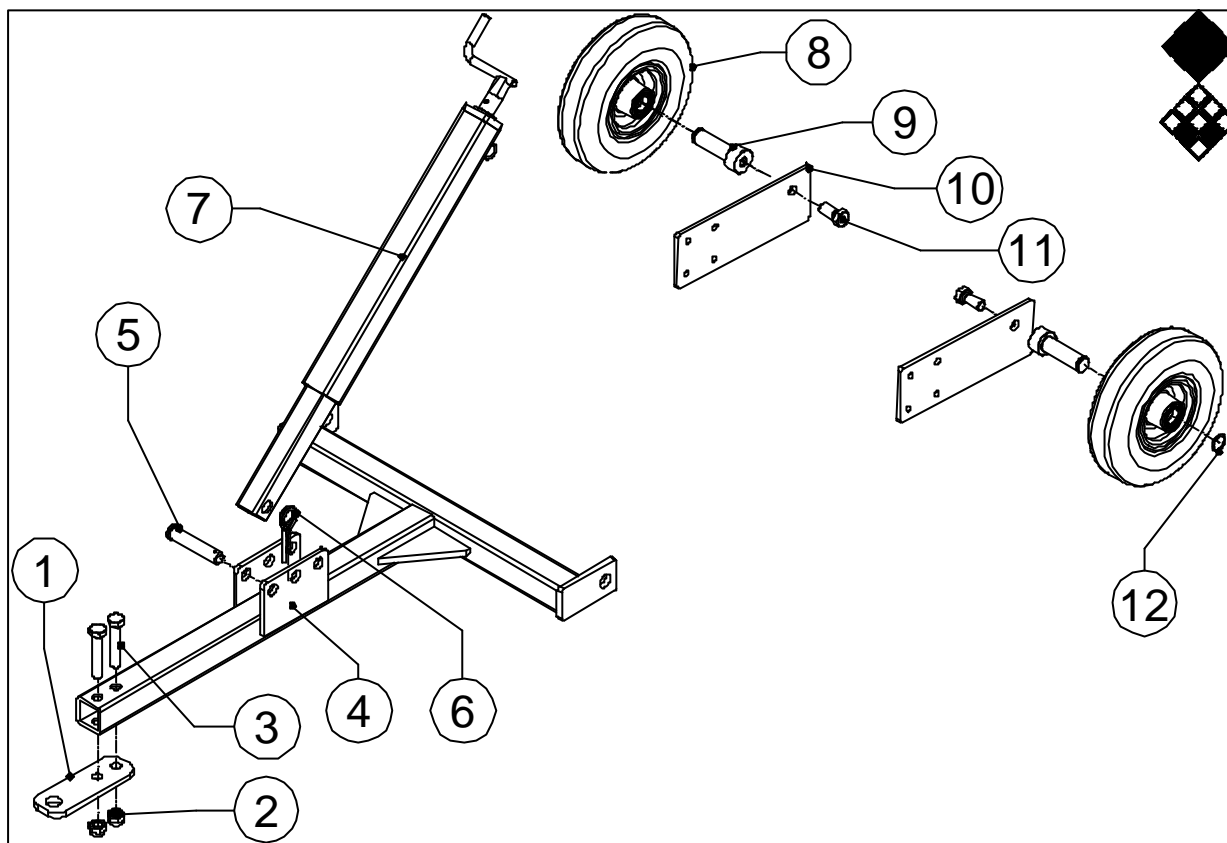


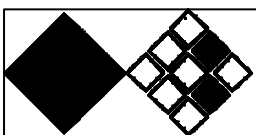


Redxim-Charterhouse Verti-Clean pag 05 code 0917

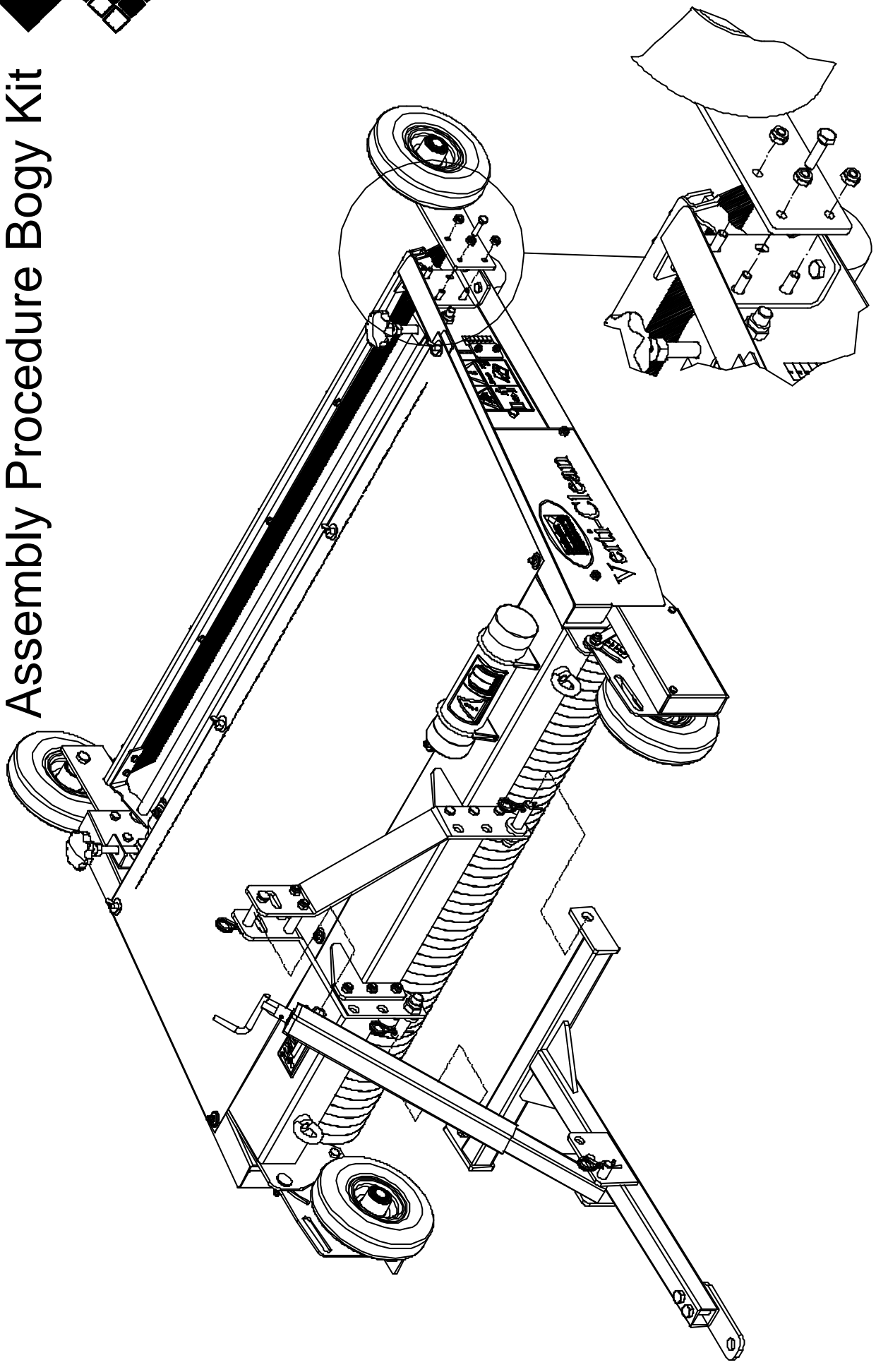
	PART #	DESCRIPTION	REMARKS	QUA
1	830.120.120	Self Lock Nut M12		004
2	464.021.950	Gauge Strip		002
3	864.120.031	Large Washer M12		006
4	402.120.070	Pivot Bush		002
5	900.260.414	Decall Ruler	Cut to right size	002
6	804.100.200	Bolt M10x20		004
7	468.053.002	Right Swingarm		001
8	804.160.350	Bolt M16x35	Use locktite	001
9	830.100.100	Self Lock Nut M10		005
10	864.160.030	Washer M16		002
11	804.120.350	Bolt M12x35		002
12	820.120.400	Mushroom Head Bolt M12x40		002
13	404.401.000	Wheel Shaft		001
14	511.255.085	Wheel	If situated on left swingarm remove 1 bearing	002
15	870.025.120	Cir Clip Ø25		001
16	878.060.450	Roll Pin Ø6x45		003
17	402.250.300	Clamp Bush Driver Wheel		001
18	414.251.650	Drive Shaft		001
19	470.400.800	Bearing House		001
20	468.053.000	Left Swingarm		001
21	830.060.060	Self Lock Nut M6	Till serial nr. C16129	002
22	110138	Spanner	Till serial nr. C16129	001
23	804.060.120	Bolt M6x12	Till serial nr. C16129	002
24	430.301.200	Sprocket 3/8"38 Teeth		001
25	631.090.809	Chain 3/8"85 Shackles		001
26	638.090.090	Chain Connector 3/8"		001
27	430.150.620	Sprocket 3/8"19 teeth		001
28	732.250.120	Bearing		002
29	826.100.100	Nut M10	From serial nr. C16229	001
30	464.051.050	Idler Strip	From serial nr. C16229	001
31	804.100.350	Bolt M10x35	From serial nr. C16229	001
32	575.141.100	Tension Spring	From serial nr. C16229	001
33	444.300.320	Idler Roll	From serial nr. C16229	001
34	804.080.300	Bolt M8x30	From serial nr. C16229	001



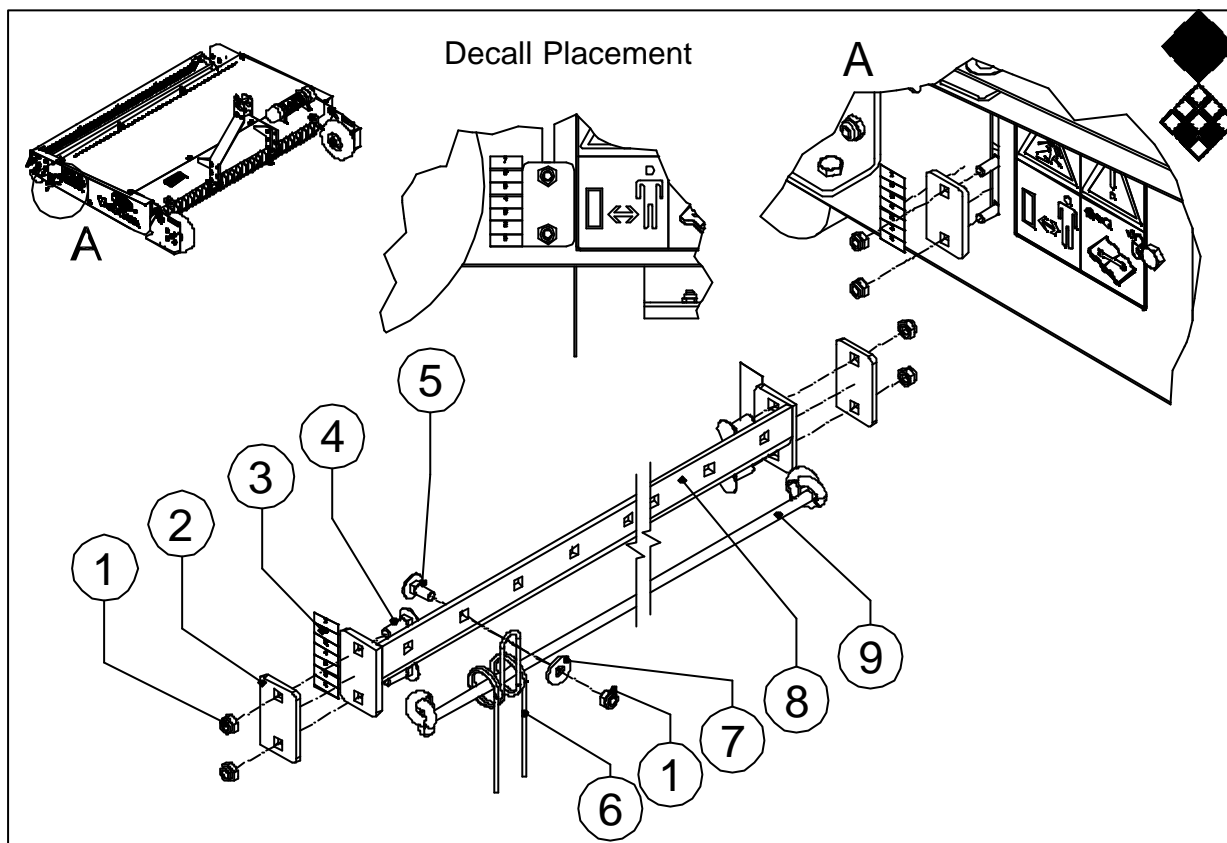
[illegible]



# Assembly Procedure Bogy Kit







**Redexim-Charterhouse Verti-Clean pag 08 code 0829**

[illegible]

### Assembly Procedure

This diagram illustrates the assembly procedure for the device. It shows the main unit with a black blade and a series of numbered callouts (1 through 18) indicating the components to be installed. The components include various brackets, screws, and a long vertical rod. The diagram is divided into two main sections: the top section shows the main unit with the blade, and the bottom section shows the assembly of the lower components. The numbered callouts are as follows:

- 1: Long vertical rod
- 2: Bracket for the rod
- 3: Bracket for the rod
- 4: Bracket for the rod
- 5: Bracket for the rod
- 6: Bracket for the rod
- 7: Bracket for the rod
- 8: Bracket for the rod
- 9: Bracket for the rod
- 10: Bracket for the rod
- 11: Bracket for the rod
- 12: Bracket for the rod
- 13: Bracket for the rod
- 14: Bracket for the rod
- 15: Bracket for the rod
- 16: Bracket for the rod
- 17: Bracket for the rod
- 18: Bracket for the rod

**Redexim-Charterhouse Verti-Clean pag 09 code 0844**

[illegible]