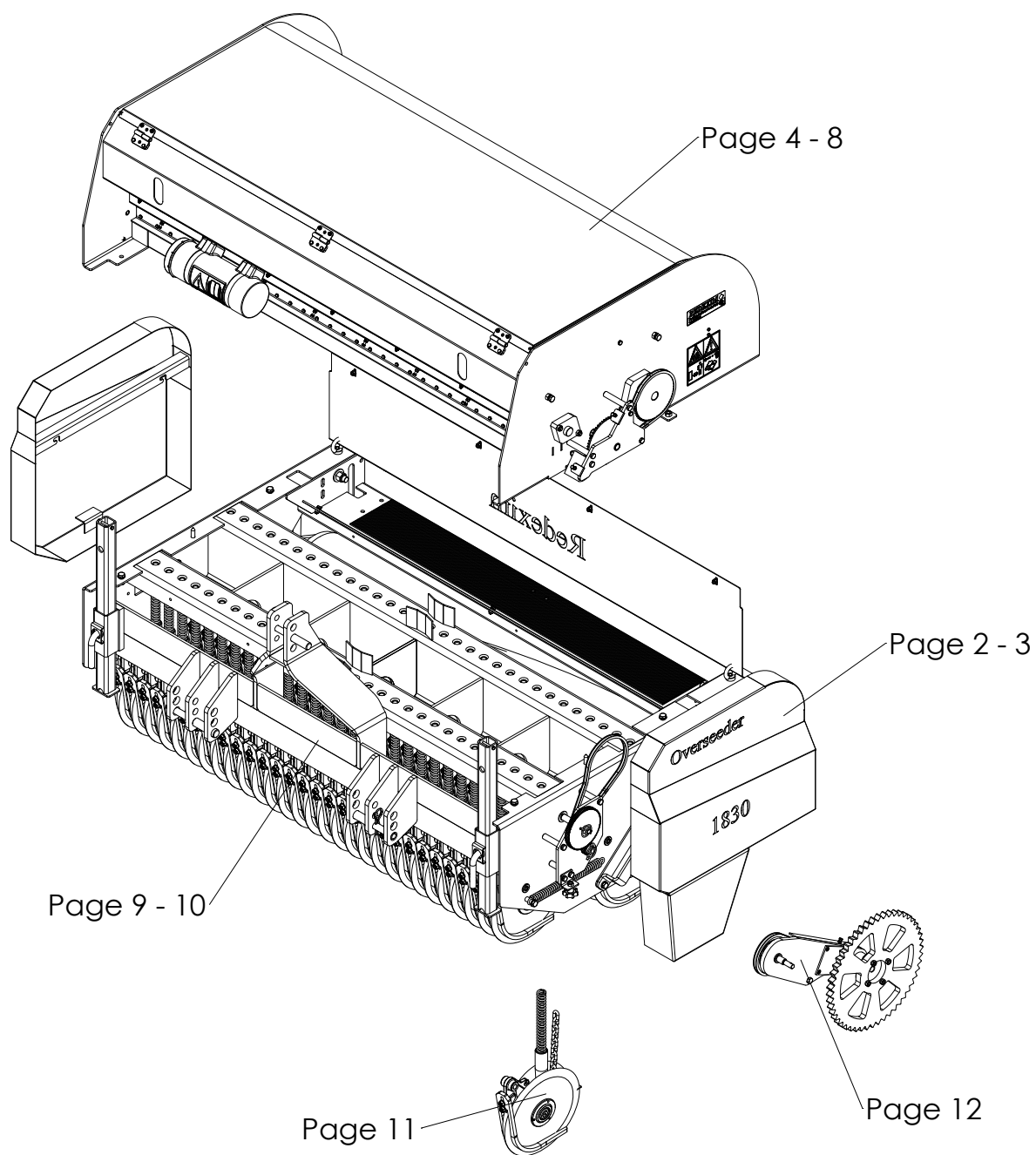
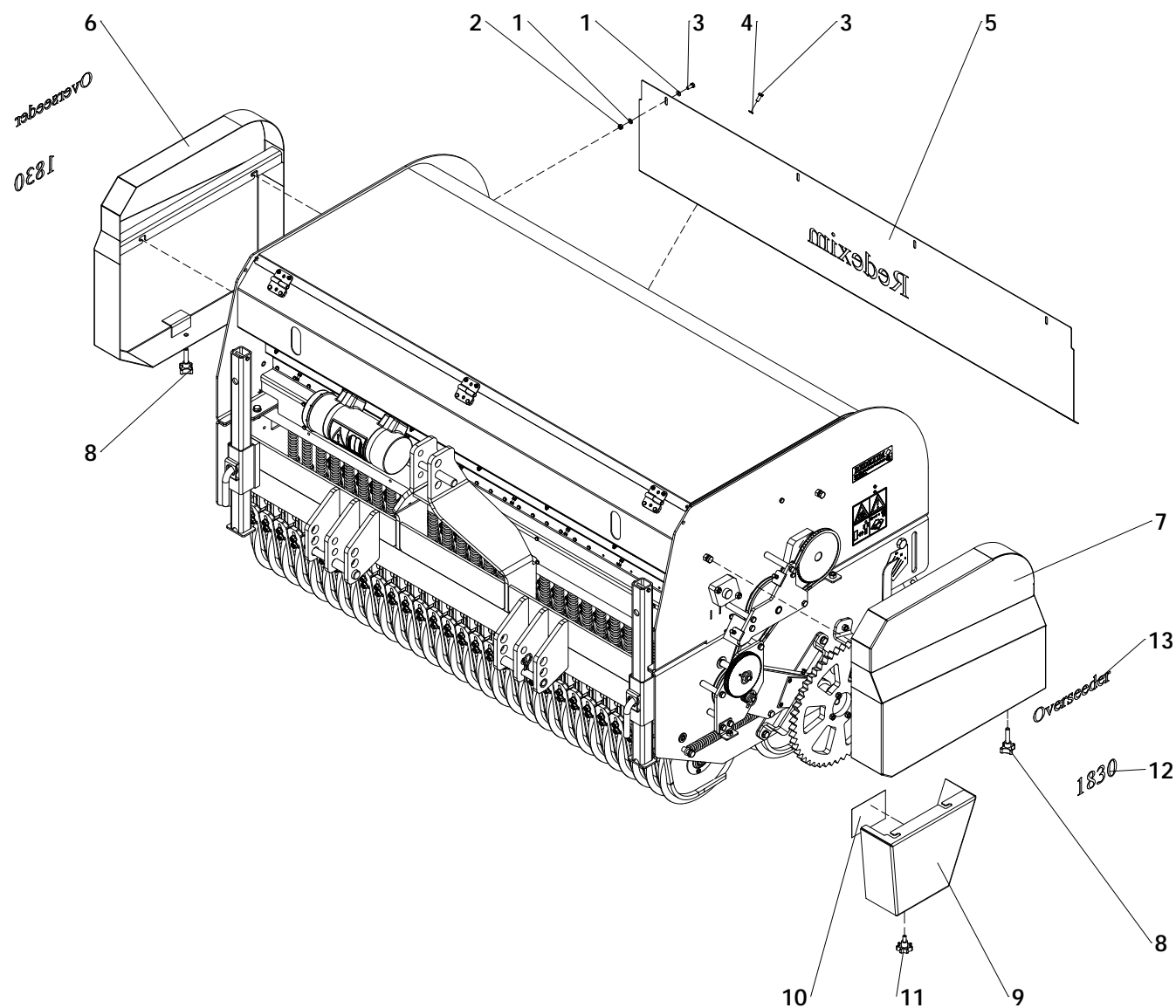


Parts manual

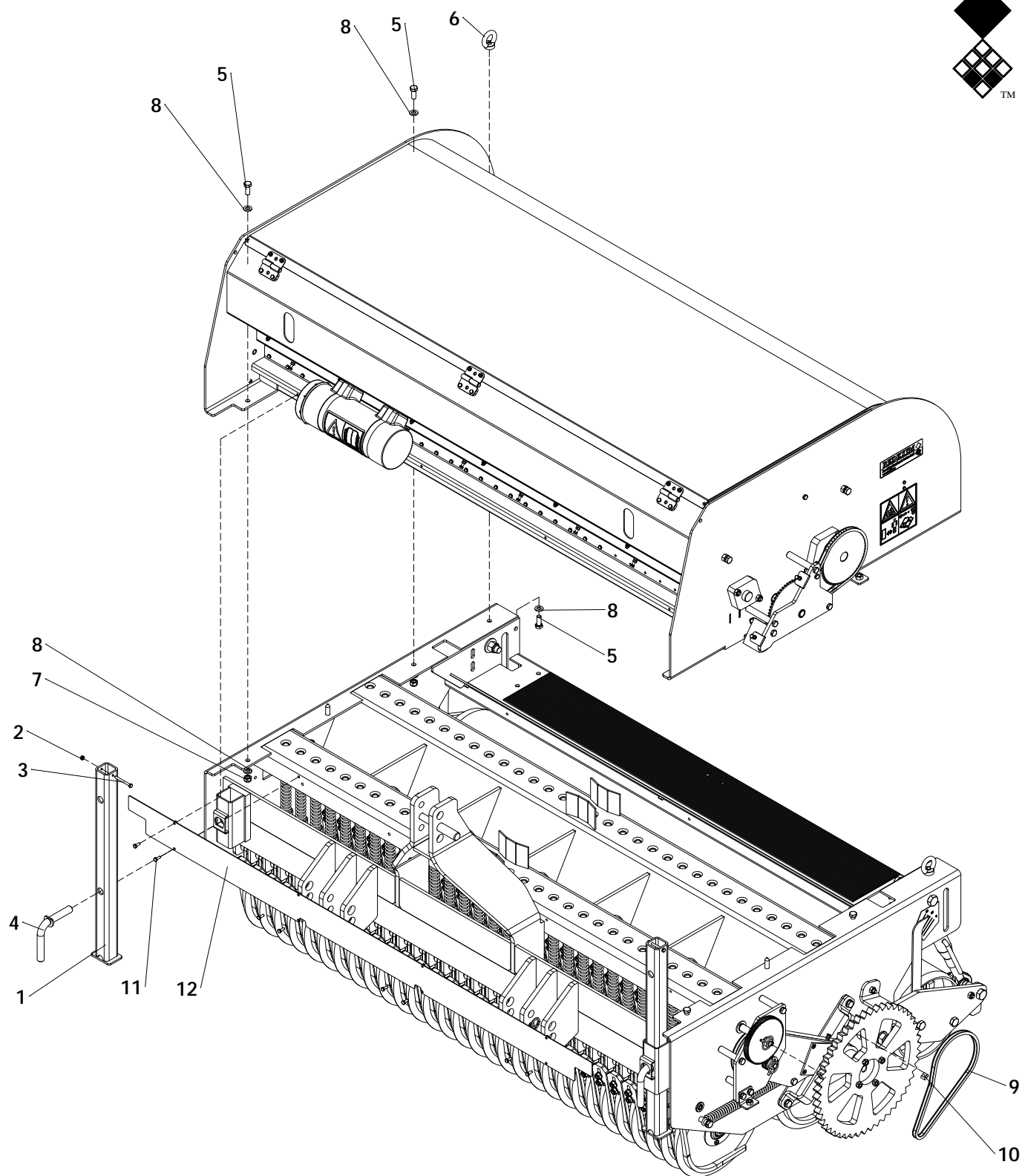




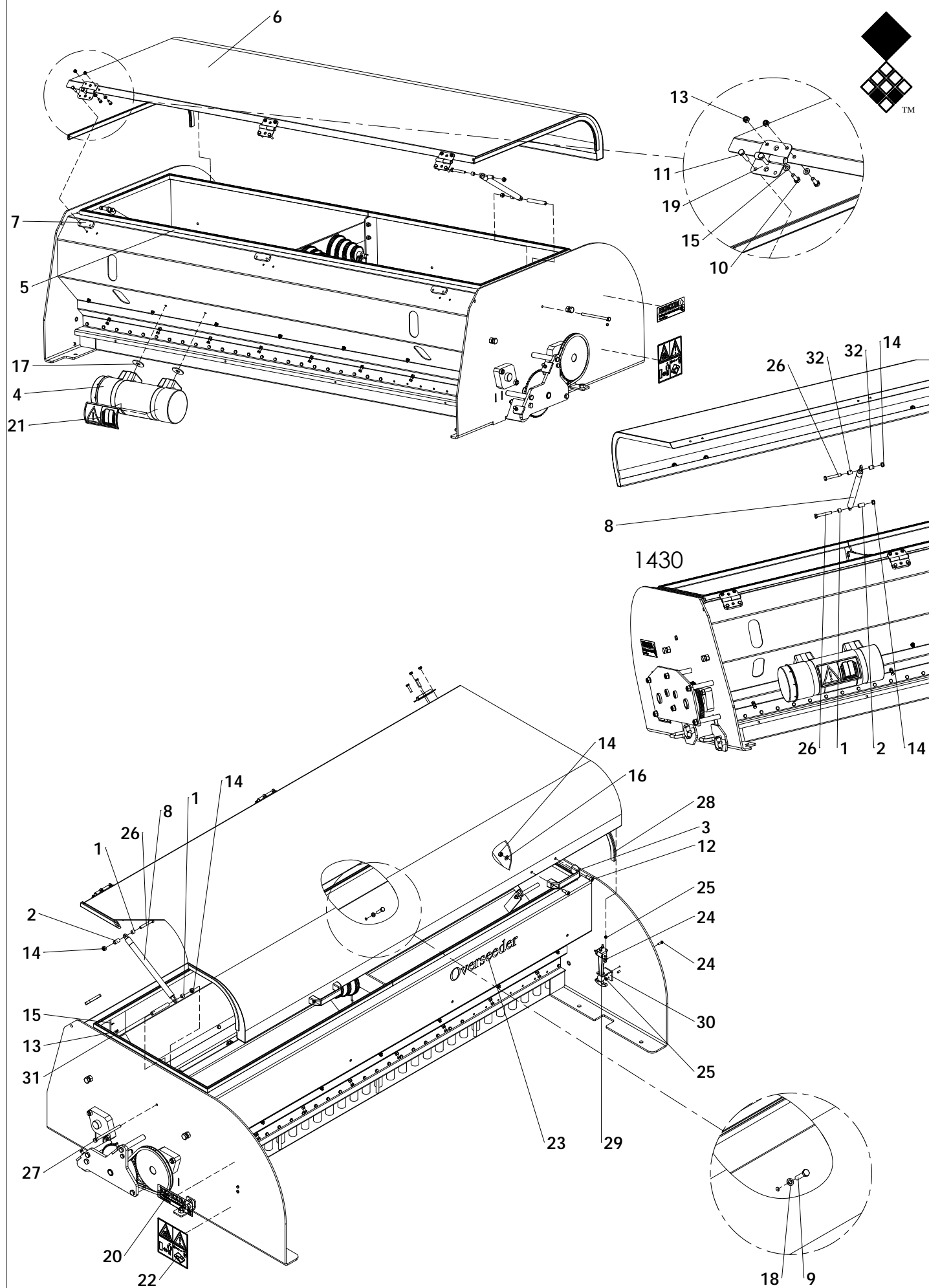
Weight kit : Page 13
Bogy Kit : Page 14 - 21



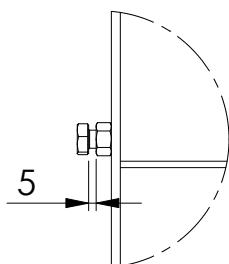
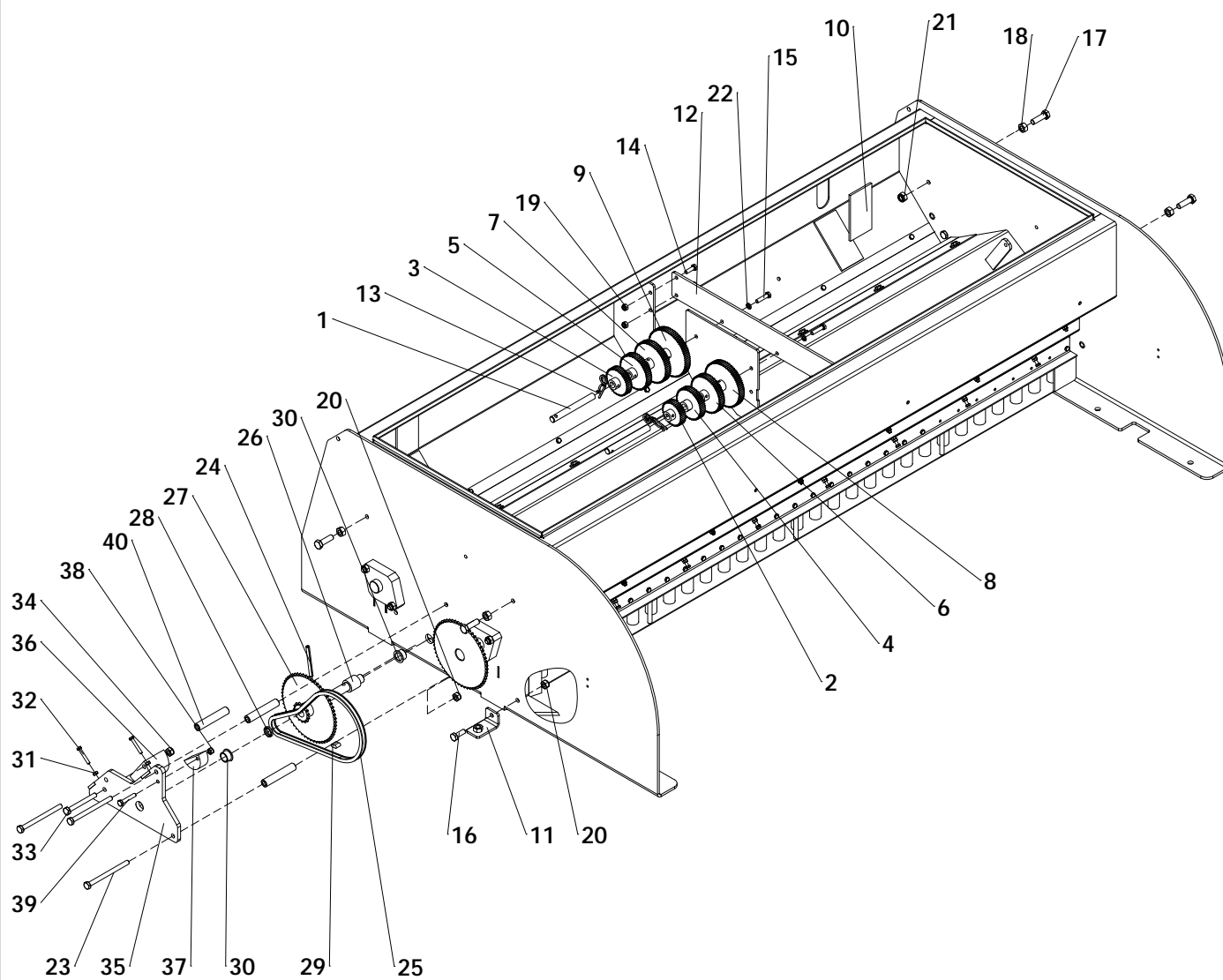
ITEM	PART NUMBER	DESCRIPTION	REMARKS	QUA OS1430	QUA OS1830	QUA OS2230
1	864.080.030	Washer M8 - ISO 7089		8	8	8
2	830.080.080	Self Lock Nut M8 - ISO 10511		4	4	4
3	804.080.200	Bolt M8 x 20 - ISO 4017		7	7	7
4	866.080.020	Spring Washer M8 - DIN 127		3	3	3
5	468.021.470	Rear cover plate	OS1430	1	0	0
	468.029.192	Rear cover plate	OS1830	0	1	0
	468.029.230	Rear cover plate	OS2230	0	0	1
6	456.070.070	Side cover right		1	1	1
7	456.070.055	Side cover left		1	1	1
8	836.120.500	Star knob M12 x50		2	2	2
9	456.036.027	Seeder cover		1	1	1
10	922.360.204	Seeding Diagram		1	1	1
11	836.100.520	Knurled knob M10x20		1	1	1
12	912.260.416	Label 1430	OS1430	2	0	0
	912.260.414	Label 1830	OS1830	0	2	0
	912.260.418	Label 2230	OS2230	0	0	2
13	922.260.402	Label Overseeder		2	2	2



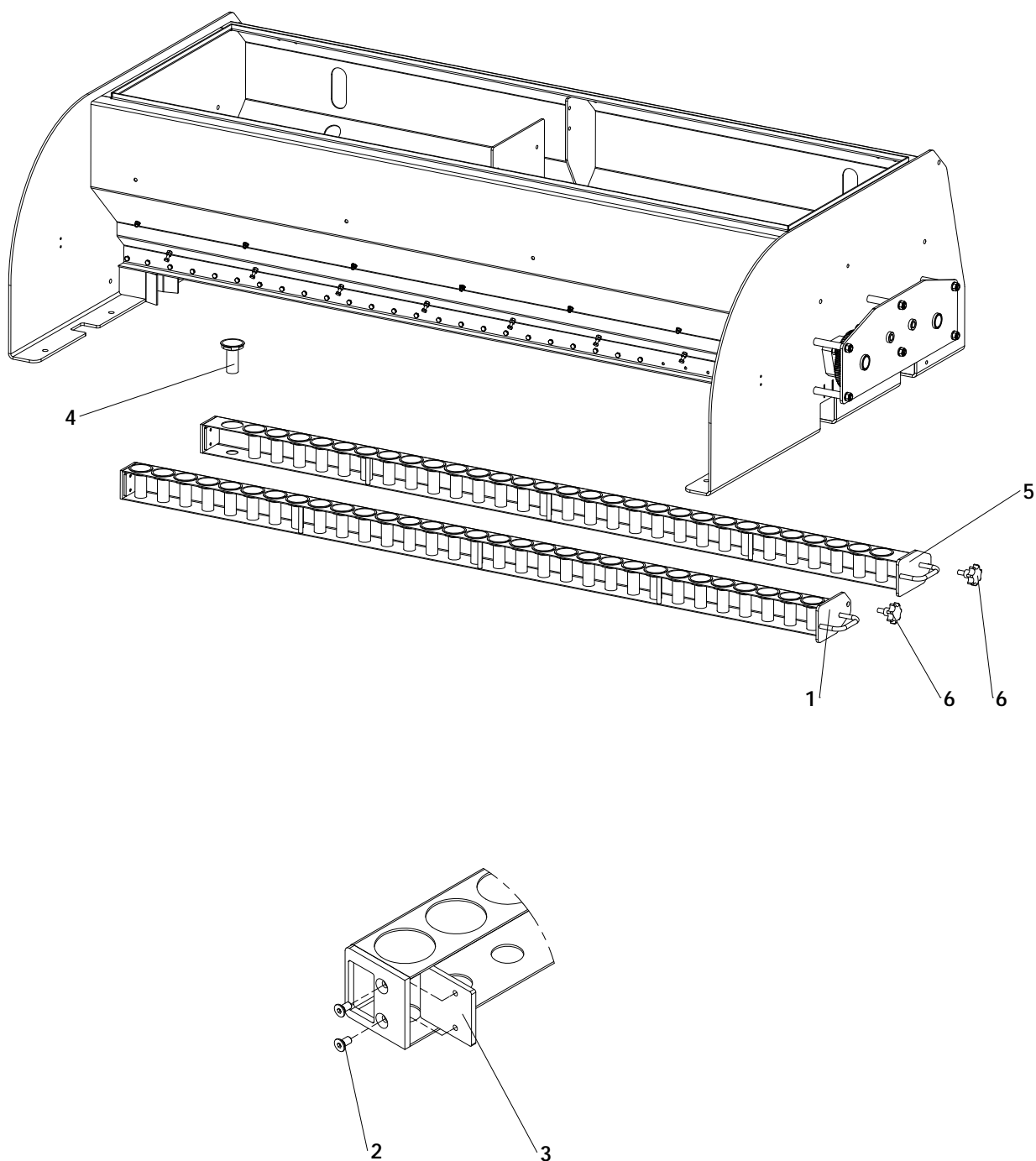
ITEM	PART NUMBER	DESCRIPTION	REMARKS	QUA OS1430	QUA OS1830	QUA OS2230
1	462.050.655	Leg overseeder		2	2	2
2	830.060.060	Self Lock Nut M6 - ISO 10511		2	2	2
3	802.060.600	Bolt M6 x 60 - ISO 4014		2	2	2
4	474.201.320	Lock pin		2	2	2
5	804.120.300	Bolt M12 x 30 - ISO 4017		6	6	6
6	822.120.360	Lifting Eye Nut M12 - DIN 582		2	2	2
7	830.120.120	Self Lock Nut M12 - ISO 10511		4	4	4
8	864.120.030	Washer M12 - ISO 7089		10	10	10
9	631.000.810	Chain 3/8" L=810mm		1	1	1
10	638.090.090	Chain connector 3_8 inch 6B Simplex		1	1	1
11	804.060.160	Bolt M6 x 16 - ISO 4017		8	8	8
12	470.029.140	Cover plate	OS1430	1	0	0
	470.029.180	Cover plate	OS1830	0	1	0
	470.029.230	Cover plate	OS2230	0	0	1



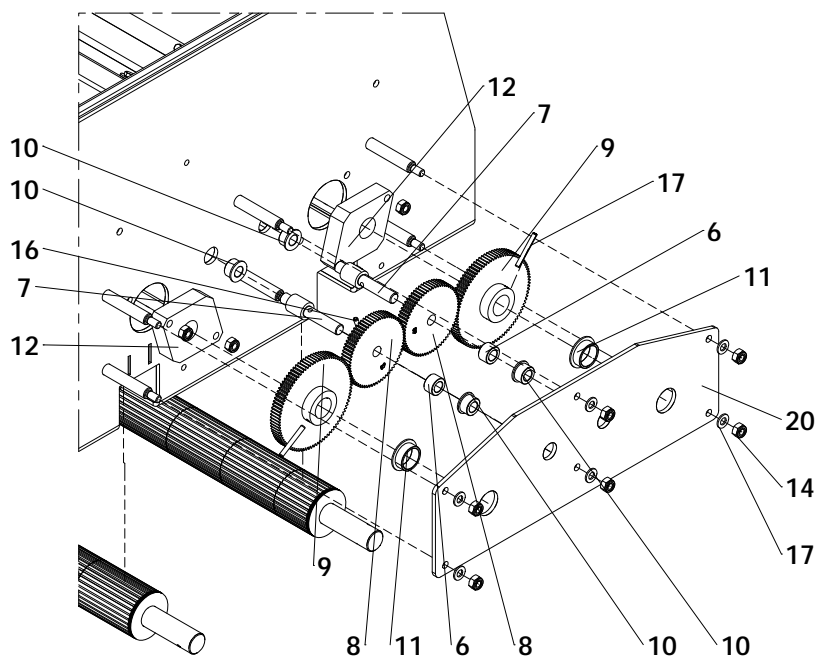
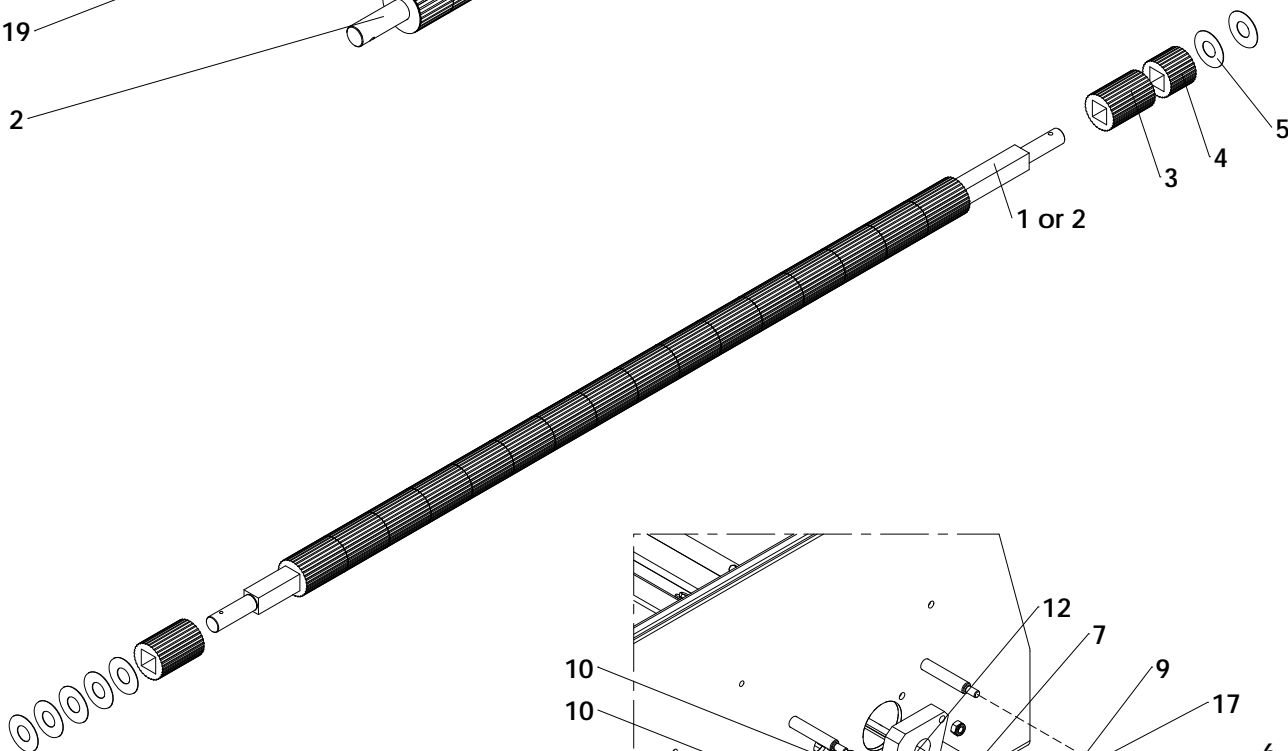
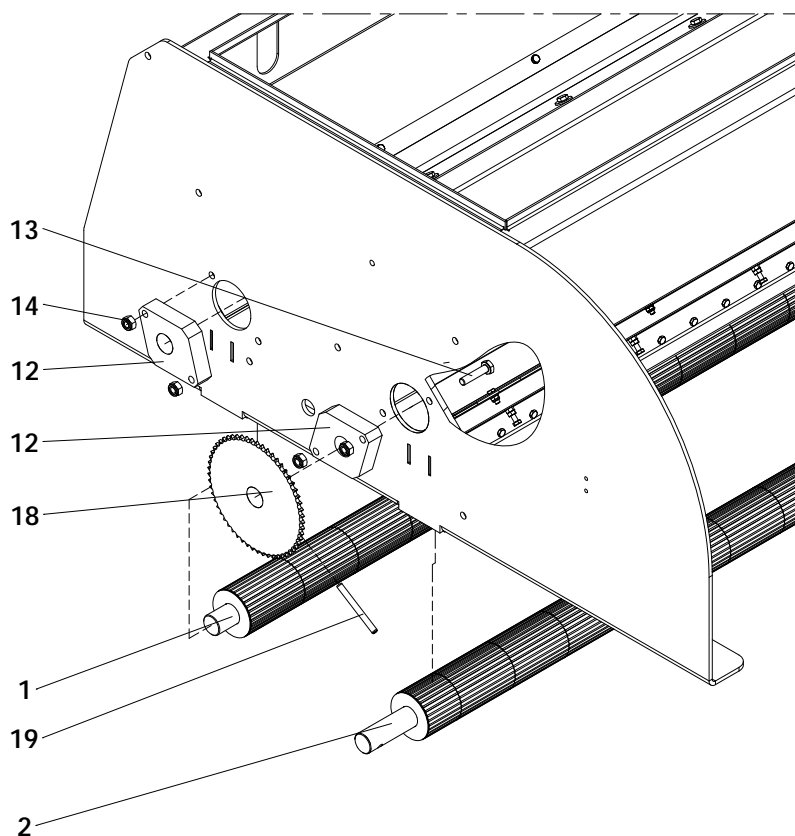
ITEM	PART NUMBER	DESCRIPTION	REMARKS	QUA OS1430	QUA OS1830	QUA OS2230
1	406.090.090	Distance bush Ø12 / Ø9 L=9		1	4	4
2	406.090.210	Distance bush Ø12 / Ø9 L=21		1	2	2
3	444.151.250	Handle		2	2	2
4	444.803.100	Toolbox Complete		1	1	1
5	446.109.390	Rubber U-seal 1-4mm L=3885	OS1430	1	0	0
	446.109.470	Rubber U-seal 1-4mm L=4725	OS1830	0	1	0
	446.109.560	Rubber U-seal 1-4mm L=5565	OS2230	0	0	1
6	456.144.082	Seeder cover	OS1430	1	0	0
	456.186.082	Seeder cover	OS1830	0	1	0
	456.228.082	Seeder cover	OS2230	0	0	1
7	464.080.650	Shim		3	3	3
8	571.224.852	Gas strut L=485/stroke=200 F=500		1	2	2
9	802.080.350	Bolt M8 x 35 - ISO 4014		2	2	2
10	804.060.160	Bolt M6 x 16 - ISO 4017		6	6	6
11	804.060.250	Bolt M6 x 25 - ISO 4017		6	6	6
12	814.080.200	Bolt M8 x 20 - DIN 912		4	4	4
13	830.060.060	Self Lock Nut M6 - ISO 10511		12	12	12
14	830.080.080	Self Lock Nut M8 - ISO 10511		4	4	4
15	864.060.030	Washer M6 - ISO 7089		16	16	16
16	864.080.030	Washer M8 - ISO 7089		4	4	4
17	864.140.031	Large washer M14 - DIN 9021		2	2	2
18	866.080.020	Spring Washer M8 - DIN 127		2	2	2
19	899.100.630	Hinge		3	3	3
20	900.260.403	Logo Label		2	2	2
21	900.280.402	Safety decall manual		1	1	1
22	921.280.402	Safety decall VS		2	2	2
23	922.260.402	Label Overseeder		1	1	1
24	804.050.160	Bolt M5 x 16 - ISO 4017		10	10	10
25	830.050.050	Self Lock Nut M5 - ISO 10511		10	10	10
26	802.080.550	Bolt M8 x 55 - ISO 4014		2	2	2
27	802.081.200	Bolt M8 x 120 - ISO 4014		0	2	2
28	446.108.800	Rubber U-seal 1-4mm L=880		2	2	2
29	590.650.000	Rubber lock assy		2	2	2
30	468.040.440	Latch for rubber lock		2	2	2
31	406.090.800	Distance bush Ø12 / Ø9 L=80		0	2	2
32	406.090.152	Distance bush Ø12 / Ø9 L=14.9		2	0	0



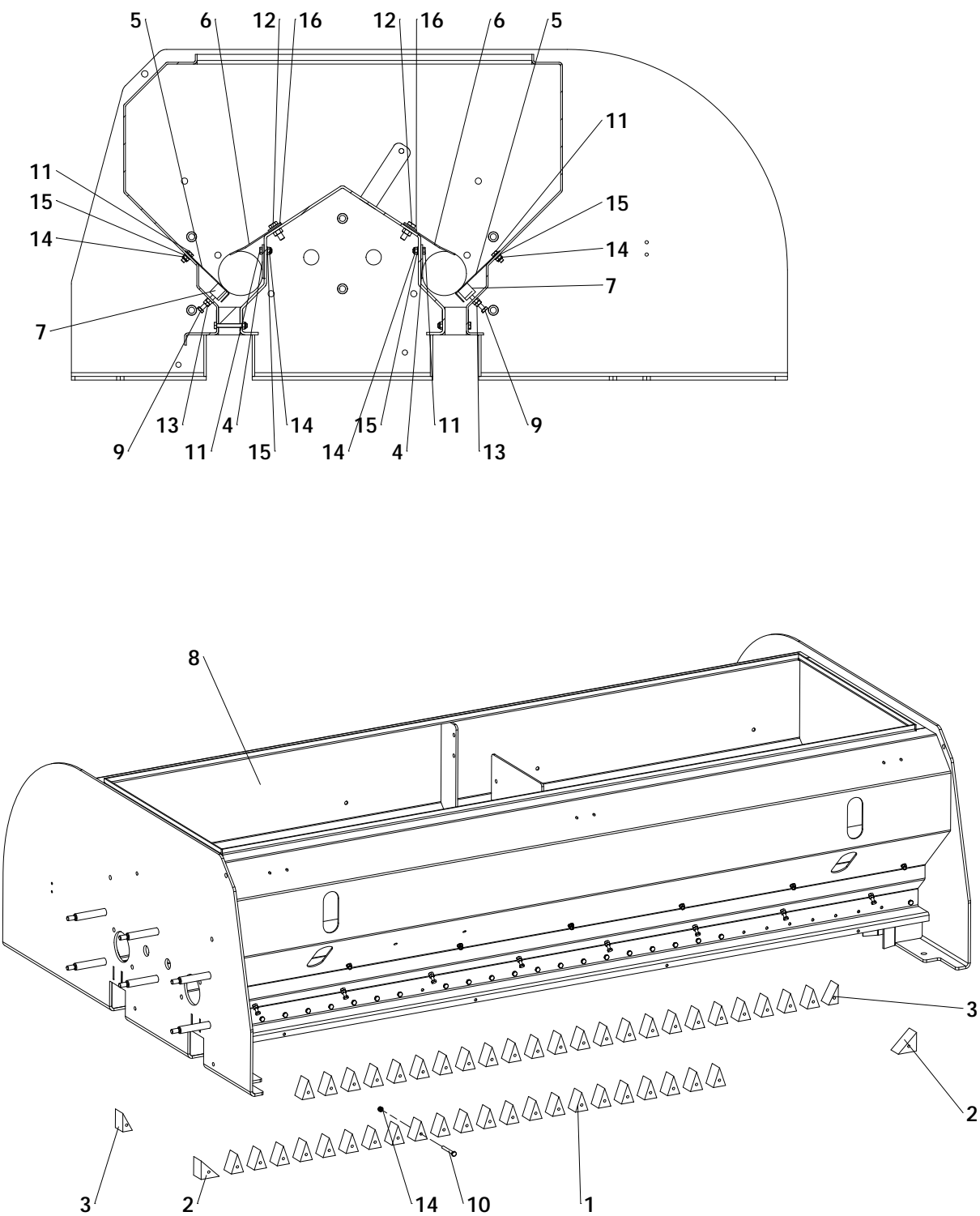
ITEM	PART NUMBER	DESCRIPTION	REMARKS	QUA OS1430	QUA OS1830	QUA OS2230
1	414.151.352	Gear storage axle		2	2	2
2	432.150.630	Seeding gear 40 teeth		1	1	1
3	432.150.700	Seeding gear 45 teeth		1	1	1
4	432.150.810	Seeding gear 52 teeth		1	1	1
5	432.150.900	Seeding gear 58 teeth		1	1	1
6	432.150.960	Seeding gear 62 teeth		1	1	1
7	432.151.050	Seeding gear 68 teeth		1	1	1
8	432.151.150	Seeding gear 75 teeth		1	1	1
9	432.151.230	Seeding gear 80 teeth		1	1	1
10	444.051.300	Hopper window		4	4	4
11	464.050.700	Cover bracket		1	1	1
12	464.065.610	Strip		1	1	1
13	523.030.750	R-Clip Round 3, DIN 11024		2	2	2
14	804.080.250	Bolt M8 x 25 - ISO 4017		6	6	6
15	804.080.350	Bolt M8 x 35 - ISO 4017		2	2	2
16	804.100.300	Bolt M10 x 30 - ISO 4017		1	1	1
17	804.120.400	Bolt M12 x 40 - ISO 4017		4	4	4
18	826.120.120	Nut M12 - DIN 934		4	4	4
19	830.080.080	Self Lock Nut M8 - ISO 10511		4	4	4
20	830.100.100	Self Lock Nut M10 - ISO 10511		1	1	1
21	830.120.120	Self Lock Nut M12 - ISO 10511		4	4	4
22	866.080.020	Spring Washer M8 - DIN 127		2	2	2
23	802.101.300	Bolt M10 x 130 - ISO 4014		3	3	3
24	878.080.800	Roll Pin 8 x 80 - ISO 8752		1	1	2
25	631.000.781	Chain 3/8" L=781 82 shackels		1	1	1
26	418.301.150	Shaft		1	1	1
27	430.460.780	Double sprocket		1	1	1
28	402.200.050	Spacer		1	1	1
29	638.090.090	Chain connector 3_8 inch 6B Simplex		1	1	1
30	442.200.152	Bearing bush swingarm		2	2	2
31	826.060.060	Nut M6 - DIN 934		2	2	2
32	804.060.400	Bolt M6 x 40 - ISO 4017		2	2	2
33	802.100.900	Bolt M10 x 90 - ISO 4014		1	1	1
34	830.100.100	Self Lock Nut M10 - ISO 10511		1	1	1
35	470.062.140	Tensioner plate		1	1	1
36	444.800.650	Chain tensioner		1	1	1
37	444.250.600	Chain tensioner		1	1	1
38	830.080.080	Self Lock Nut M8 - ISO 10511		1	1	1
39	802.080.450	Bolt M8 x 45 - ISO 4014		1	1	1
40	406.100.840	Spacer		3	3	3



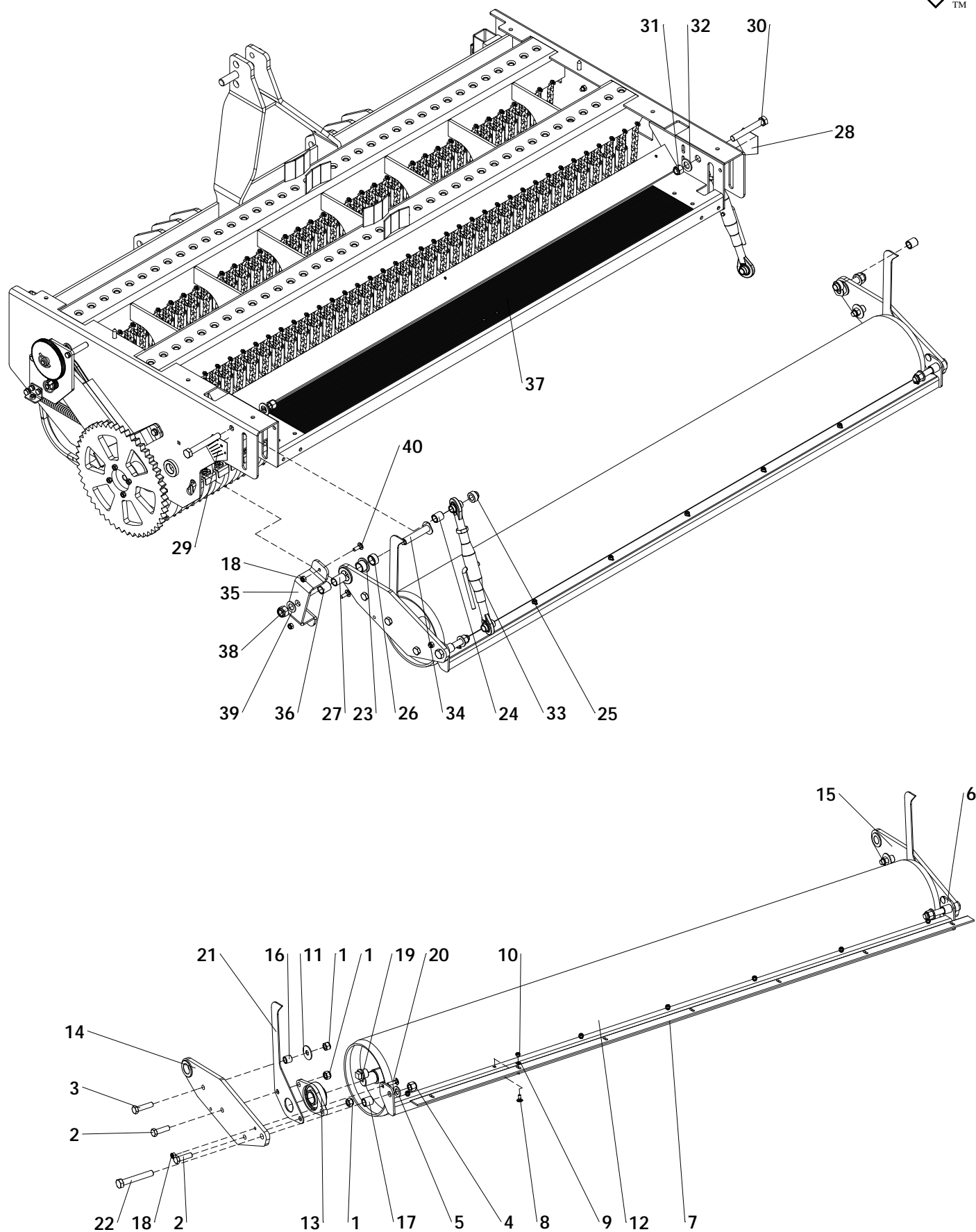
ITEM	PART NUMBER	DESCRIPTION	REMARKS	QUA OS1430	QUA OS1830	QUA OS2230
1	494.152.015	Funnel beam rear	OS1430	1	0	0
	494.195.011	Funnel beam rear	OS1830	0	1	0
	494.236.015	Funnel beam rear	OS2230	0	0	1
2	816.060.120	Bolt M6 x 12 - DIN 7991		4	4	4
3	464.050.604	Cover plate		2	2	2
4	444.500.710	Funnel DD overseeder		47	61	75
5	494.151.015	Funnel beam front	OS1430	1	0	0
	494.195.012	Funnel beam front	OS1830	0	1	0
	494.235.015	Funnel beam front	OS2230	0	0	1
6	836.100.520	Knurled knob M10x20		2	2	2



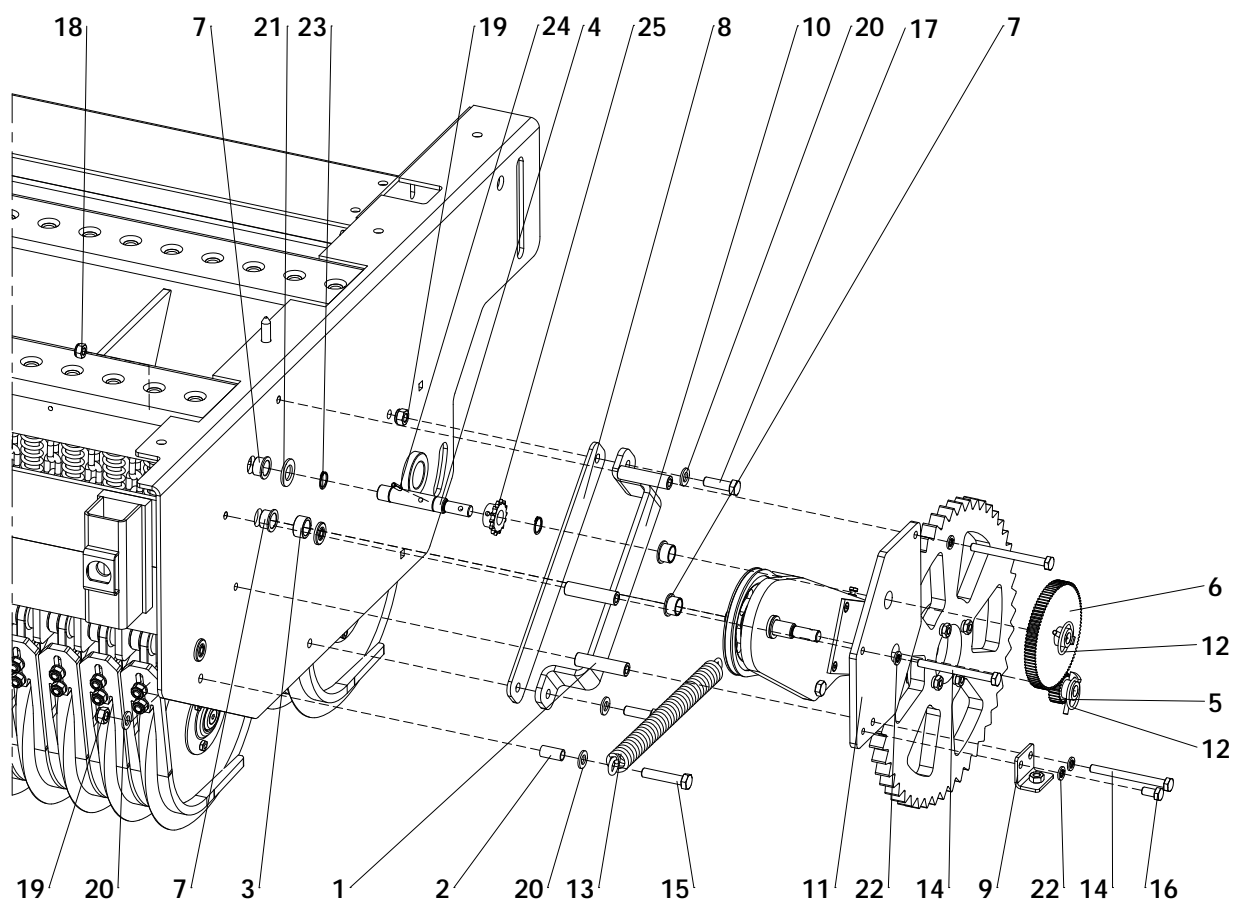
ITEM	PART NUMBER	DESCRIPTION	REMARKS	QUA OS1430	QUA OS1830	QUA OS2230
1	472.359.150	Seeder main axle short	OS1430	1	0	0
	472.359.201	Seeder main axle short	OS1830	0	1	0
	472.359.240	Seeder main axle short	OS2230	0	0	1
2	472.359.160	Seeder main axle	OS1430	1	0	0
	472.359.207	Seeder main axle	OS1830	0	1	0
	472.359.250	Seeder main axle	OS2230	0	0	1
3	446.700.500	Seeder disk		28	36	44
4	446.700.438	Seeder disk short L=43.8	OS1430	2	0	0
	446.700.350	Seeder disk short	OS1830	0	2	0
	446.700.774	Seeder disk short L=77.4	OS2230	0	0	2
5	468.010.690	Shim		14	14	14
6	406.150.150	Distance bush Ø25/Ø15.2 L=15.2		2	2	2
7	414.151.100	Gear axle		2	2	2
8	432.151.050	Seeding gear 68 teeth		2	2	2
9	432.301.380	Gear 90 teeth		2	2	2
10	442.150.150	Bearing bush		4	4	4
11	442.300.140	Bearing bush		2	2	2
12	444.251.030	Bearing block overseeder		4	4	4
13	802.100.450	Bolt M10 x 45 - ISO 4014		8	8	8
14	830.100.100	Self Lock Nut M10 - ISO 10511		14	14	14
17	864.100.030	Washer M10 - ISO 7089		6	6	6
16	878.060.260	Roll Pin 6 x 26 - ISO 8752		2	2	2
17	878.060.500	Roll Pin 6 x 50 - ISO 8752		2	2	2
18	635.001.782	Sprocket 3/8" (06B) simplex 57Z		1	1	1
19	878.080.800	Roll Pin 8 x 80 - ISO 8752		1	1	1
20	468.065.300	Gear plate		1	1	1



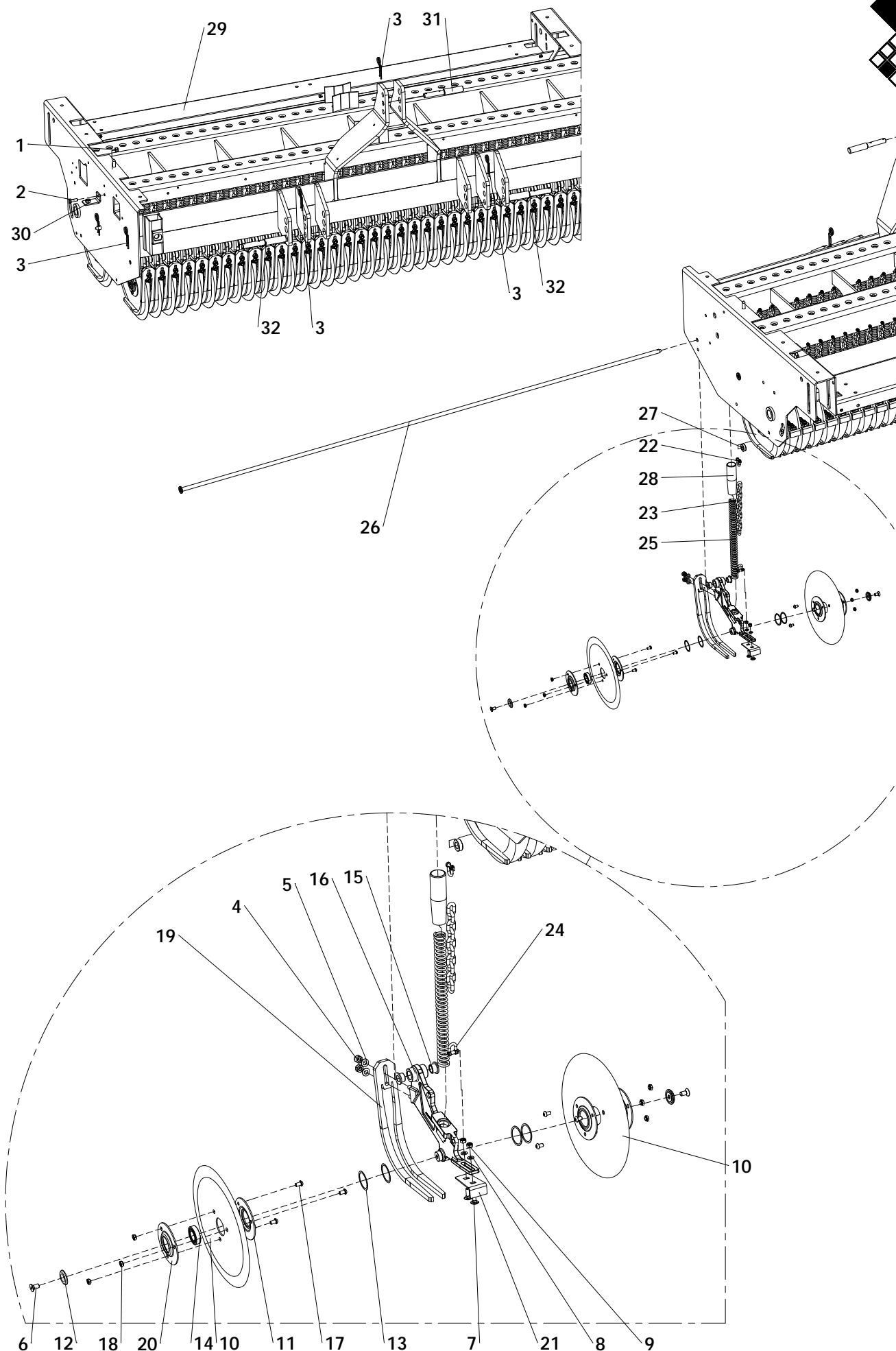
ITEM	PART NUMBER	DESCRIPTION	REMARKS	QUA OS1430	QUA OS1830	QUA OS2230
1	444.250.350	Seed divider DD overseeder		45	59	73
2	444.475.350	Seed divider sideblocks DD overseeder		2	2	2
3	444.475.352	Seed divider sideblocks DD overseeder		2	2	2
4	464.039.100	Pressure plate		2	2	2
5	468.019.140	Pressure plate front	OS1430	2	0	0
	468.019.190	Pressure plate front	OS1830	0	2	0
	468.019.230	Pressure plate front	OS2230	0	0	2
6	468.029.149	Block strip	OS1430	2	0	0
	468.029.194	Block strip	OS1830	0	2	0
	468.029.232	Block strip	OS2230	0	0	2
7	472.209.140	Pressure bar	OS1430	2	0	0
	472.209.192	Pressure bar	OS1830	0	2	0
	472.209.220	Pressure bar	OS2230	0	0	2
8	494.117.156	Hopper Overseeder 1430	OS1430	1	0	0
	494.117.198	Hopper Overseeder 1830	OS1830	0	1	0
	494.117.240	Hopper Overseeder 2230	OS2230	0	0	1
9	802.060.350	Bolt M6 x 35 - ISO 4017		16	16	18
10	802.060.500	Bolt M6 x 50 - ISO 4014		49	63	77
11	804.060.160	Bolt M6 x 16 - ISO 4017		22	22	26
12	804.080.250	Bolt M8 x 25 - ISO 4017		16	16	16
13	826.060.060	Nut M6 - DIN 934		16	16	16
14	830.060.060	Self Lock Nut M6 - ISO 10511		71	85	103
15	864.060.030	Washer M6 - ISO 7089		22	22	26
16	864.080.024	Large washer M8 - DIN 9021		16	16	16



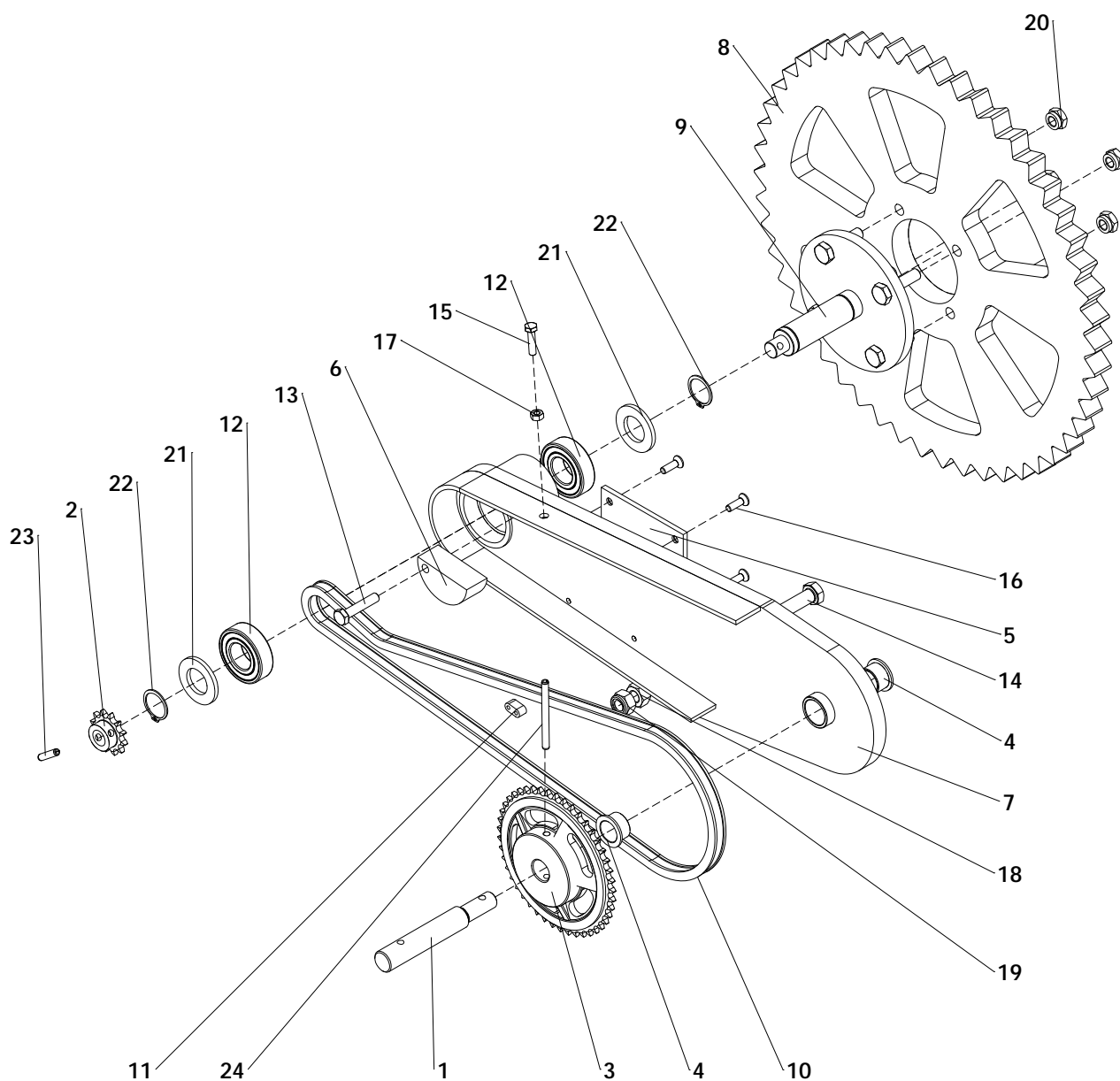
ITEM	PART NUMBER	DESCRIPTION	REMARKS	QUA OS1430	QUA OS1830	QUA OS2230
1	830.160.160	Self Lock Nut M16 - ISO 10511		6	6	6
2	802.160.550	Bolt M16 x 55 - ISO 4014		4	4	4
3	802.160.650	Bolt M16 x 65 - ISO 4014		2	2	2
4	840.190.230	SL Nut 3/4"-16 UNF		2	2	2
5	864.200.030	Washer M20 - ISO 7089		2	2	2
6	462.106.914	Scraper frame	OS1430	1	0	0
	462.106.919	Scraper frame	OS1830	0	1	0
	462.110.923	Scraper frame	OS2230	0	0	1
7	466.059.140	Scraper	OS1430	1	0	0
	466.059.190	Scraper	OS1830	0	1	0
	466.059.230	Scraper	OS2230	0	0	1
8	820.080.200	MH Bolt M8 x 20 ISO 8677		5	5	7
9	864.080.030	Washer M8 - ISO 7089		5	5	7
10	830.080.080	Self Lock Nut M8 - ISO 10511		5	5	7
11	864.160.031	Large washer M16 - DIN 9021		2	2	2
12	488.273.148	Rear roller	OS1430	1	0	0
	488.273.190	Rear roller	OS1830	0	1	0
	488.273.232	Rear roller	OS2230	0	0	1
13	742.400.520	Bearing UCFL 208		2	2	2
14	470.155.100	Roller arm left		1	1	1
15	470.155.102	Roller arm right		1	1	1
16	406.160.202	Distance bush Ø24 / Ø16.2 L=22		2	2	2
17	406.200.302	Distance bush Ø28 / Ø20 L=30		2	2	2
18	830.100.100	Self Lock Nut M10 - ISO 10511		2	2	2
19	856.303.000	Plug M30x1.5		1	1	1
20	820.100.350	MH Bolt M10 x 35 ISO 8677		10	10	10
21	468.044.250	Indicator strip		2	2	2
22	808.191.270	Hex Bolt 0.75"-16x5" UNF - ANSI B18.2.1		2	2	2
23	442.280.240	Bearing bush		2	2	2
24	406.200.302	Distance bush Ø28 / Ø20 L=30		2	2	2
25	404.200.240	Bush Ø35 / Ø20 L=24		2	2	2
26	442.280.200	Bearing bush		2	2	2
27	406.200.662	Distance bush Ø28 / Ø22.2 L=43		2	2	2
28	912.340.000	Height indicator right		1	1	1
29	912.340.002	Height indicator left		1	1	1
30	808.191.400	Hex Bolt 3/4-16x5.5 UNF		2	2	2
31	840.190.230	SL Nut 3/4"-16 UNF		2	2	2
32	864.240.044	Washer M24 - ISO 7089		2	2	2
33	522.194.370	Toplink Cat. 1 L0=370 Stroke=250 M24x3		2	2	2
34	474.201.210	Pivot pin		2	2	2
35	468.082.804	Bracket		2	2	2
36	402.220.350	Bush		2	2	2
37	446.049.120	Rubber grip plate	OS1430	1	0	0
	446.049.161	Rubber grip plate	OS1830	0	1	0
	446.049.208	Rubber grip plate	OS2230	0	0	1
38	830.220.220	Self Lock Nut M22 - ISO 10511		2	2	2
39	864.220.030	Washer M22 - ISO 7089		2	2	2
40	820.100.300	MH Bolt M10 x 30 ISO 8677		4	4	4



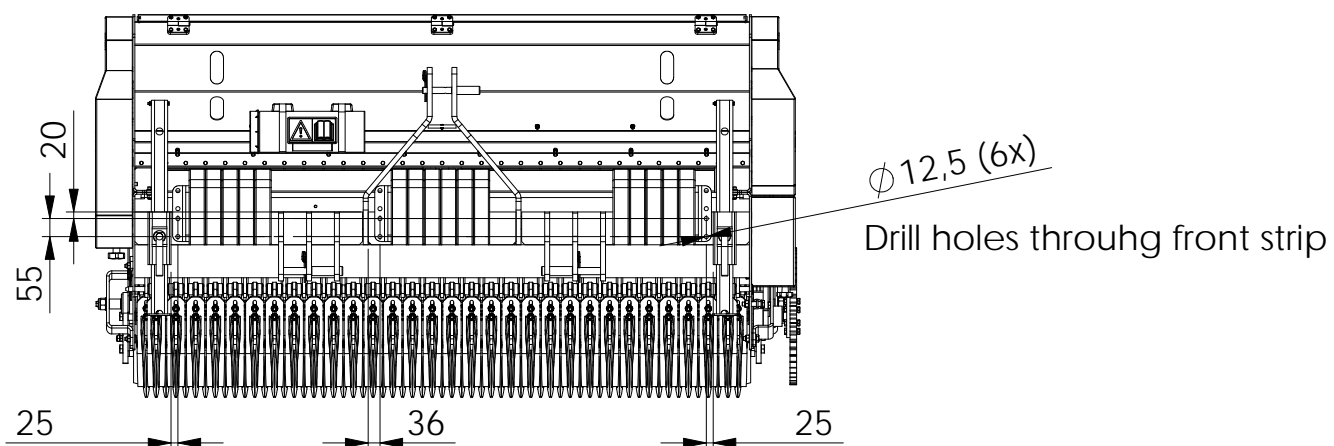
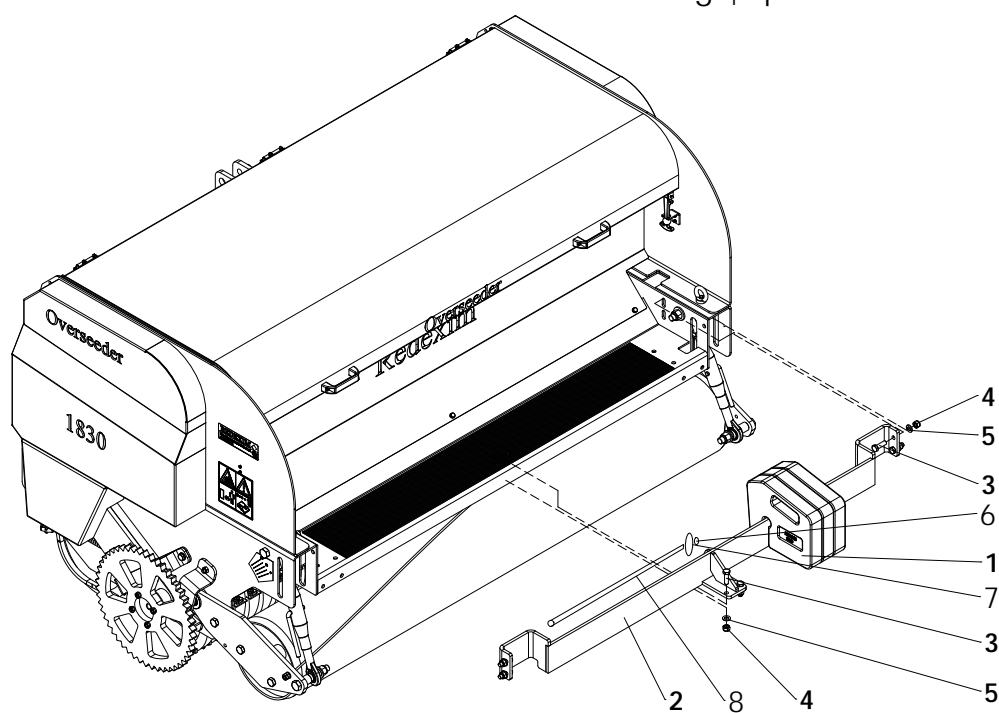
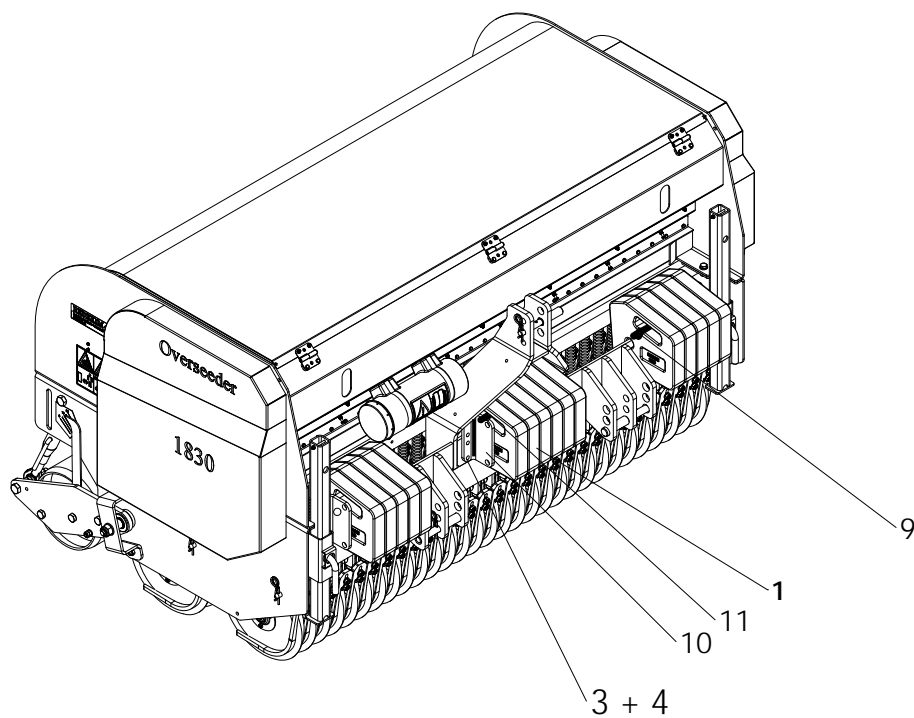
ITEM	PART NUMBER	DESCRIPTION	REMARKS	QUA OS1430	QUA OS1830	QUA OS2230
1	406.100.730	Spacer for gearplate		3	3	3
2	406.150.300	Distance bush spring wheel		1	1	1
3	406.210.130	Distance bush Ø28 / Ø21 L=13.5		1	1	1
4	418.201.330	Shaft gearbox		1	1	1
5	432.150.400	Seeding gear 25 teeth	See page 05 for other gears	1	1	1
6	432.151.450	Seeding gear 95 teeth	See page 05 for other gears	1	1	1
7	442.200.152	Bearing bush swingarm		4	4	4
8	444.054.100	Guide plate swingarm		1	1	1
9	468.040.504	Cover bracket		1	1	1
10	468.084.150	Guide swingarm		1	1	1
11	468.102.502	Gear plate		1	1	1
12	523.060.320	Linch pin Ø6		2	2	2
13	575.302.250	Spring wheelaxle		1	1	1
14	802.101.100	Bolt M10 x 110 - ISO 4014		3	3	3
15	802.201.000	Bolt M12 x 60 - ISO 4014		1	1	1
16	804.100.200	Bolt M10 x 20 - ISO 4017		1	1	1
17	804.120.400	Bolt M12 x 40 - ISO 4017		2	2	2
18	830.100.100	Self Lock Nut M10 - ISO 10511		3	3	3
19	830.120.120	Self Lock Nut M12 - ISO 10511		3	3	3
20	864.120.030	Washer M12 - ISO 7089		4	4	4
21	864.200.030	Washer M20 - ISO 7089		1	1	1
22	866.100.020	Spring Washer M10 - DIN 127		4	4	4
23	870.020.120	Circlip d=20 - DIN 471		2	2	2
24	878.060.260	Roll Pin 6 x 26 - ISO 8752		1	1	1
25	430.200.180	Chain wheel 06B 14Z		1	1	1



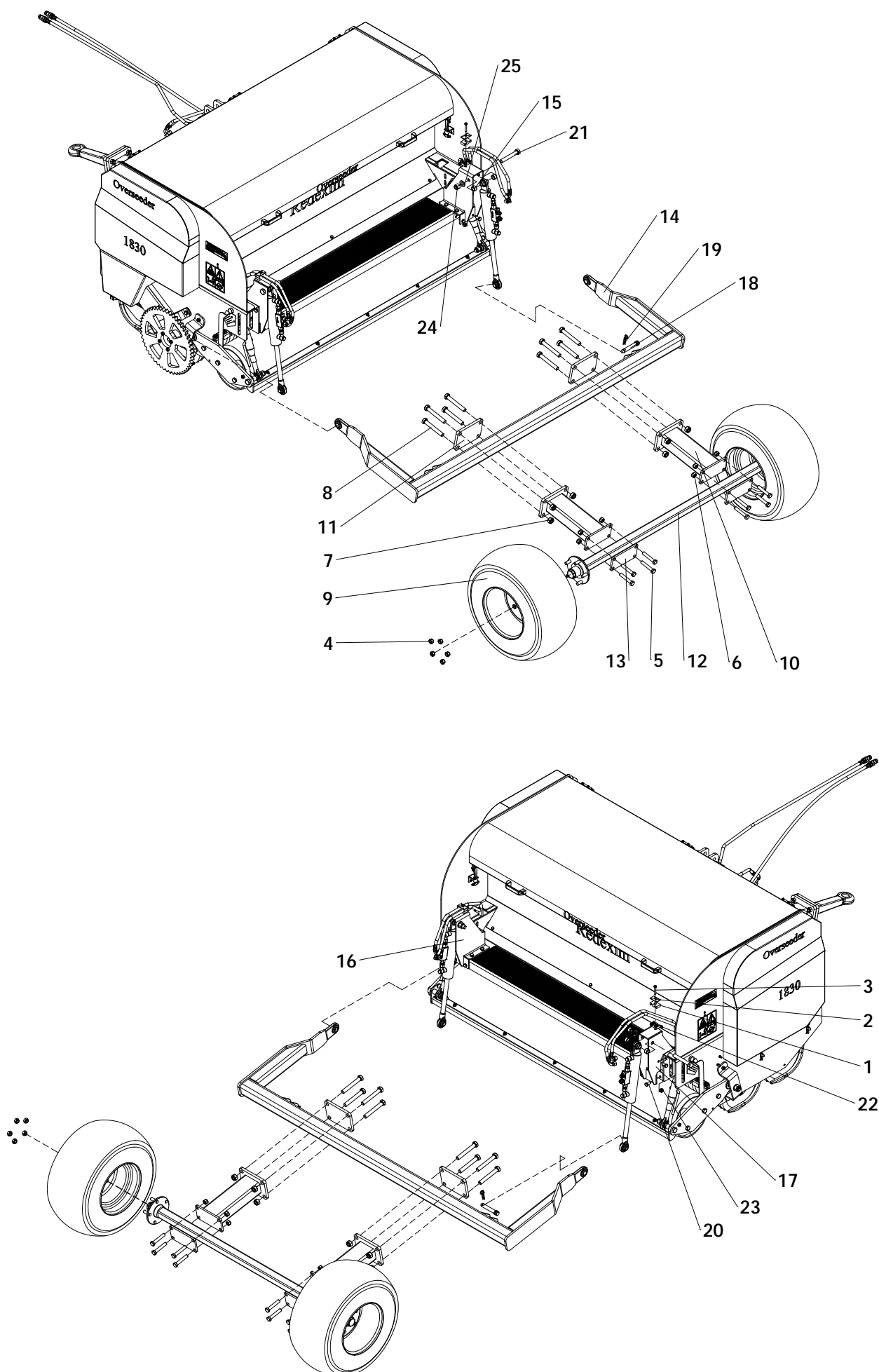
ITEM	PART NUMBER	DESCRIPTION	REMARKS	QUA OS1430	QUA OS1830	QUA OS2230
1	830.100.100	Self Lock Nut M10 - ISO 10511		1	1	1
2	804.100.300	Bolt M10 x 30 - ISO 4017		1	1	1
3	523.051.000	R-clip Round 5, DIN 11024		5	5	5
4	830.100.100	Self Lock Nut M10 - ISO 10511	Qua for 1 element	2	2	2
5	864.100.030	Washer M10 - ISO 7089	Qua for 1 element	2	2	2
6	816.100.202	Bolt M10 x 20 -10,9 DIN 7991	Qua for 1 element	2	2	2
7	820.080.200	MH Bolt M8 x 20 ISO 8677	Qua for 1 element	2	2	2
8	864.080.030	Washer M8 - ISO 7089	Qua for 1 element	2	2	2
9	830.080.080	Self Lock Nut M8 - ISO 10511	Qua for 1 element	2	2	2
10	468.023.202	Cutting disk Ø320	Qua for 1 element	2	2	2
11	468.031.104	Center plate	Qua for 1 element	2	2	2
12	410.100.070	Lock bush Ø38	Qua for 1 element	2	2	2
13	406.420.010	Shim 50x42 D=0.5mm	Qua for 1 element	4	4	4
14	713.250.120	Bearing 6005 2RS	Qua for 1 element	2	2	2
15	442.160.150	Bearing bush	Qua for 1 element	2	2	2
16	470.123.490	Seeding element	Qua for 1 element	1	1	1
		Seeding element	Qua for 1 machine	47	61	75
17	814.080.140	Bolt M8 x 14 - ISO 7380	Qua for 1 element	6	6	6
18	844.080.650	M8 KALEI nut	Qua for 1 element	6	6	6
19	468.123.260	Cutting guide	Qua for 1 element	1	1	1
20	468.031.105	Side pressure plate	Qua for 1 element	2	2	2
21	468.030.802	Scraper	Qua for 1 element	1	1	1
22	846.060.241	D-Shackle d=6mm		47	61	75
23	899.082.500	Chain seeding element 10-links D=8mm L=250		47	61	75
24	846.060.242	D-Shackle d=6mm with bolt		47	61	75
25	438.303.950	Spring seeding element DD		47	61	75
26	474.169.150	Seeding element shaft	OS1430	2	0	0
	474.169.190	Seeding element shaft	OS1830	0	2	0
	474.169.230	Seeding element shaft	OS2230	0	0	2
27	406.160.100	Distance bush Ø30 / Ø16.2 L=10		2	2	2
28	444.400.140	Spring seed guide tube		47	61	75
29	494.148.124	Frame DD Overseeder 1430	OS1430	1	0	0
	494.206.124	Frame DD Overseeder 1830	OS1830	0	1	0
	494.232.124	Frame DD Overseeder 2230	OS2230	0	0	1
30	464.050.700	Cover bracket		1	1	1
31	521.191.600	Top link pin OS		1	1	1
32	521.221.600	3-point pin		2	2	2



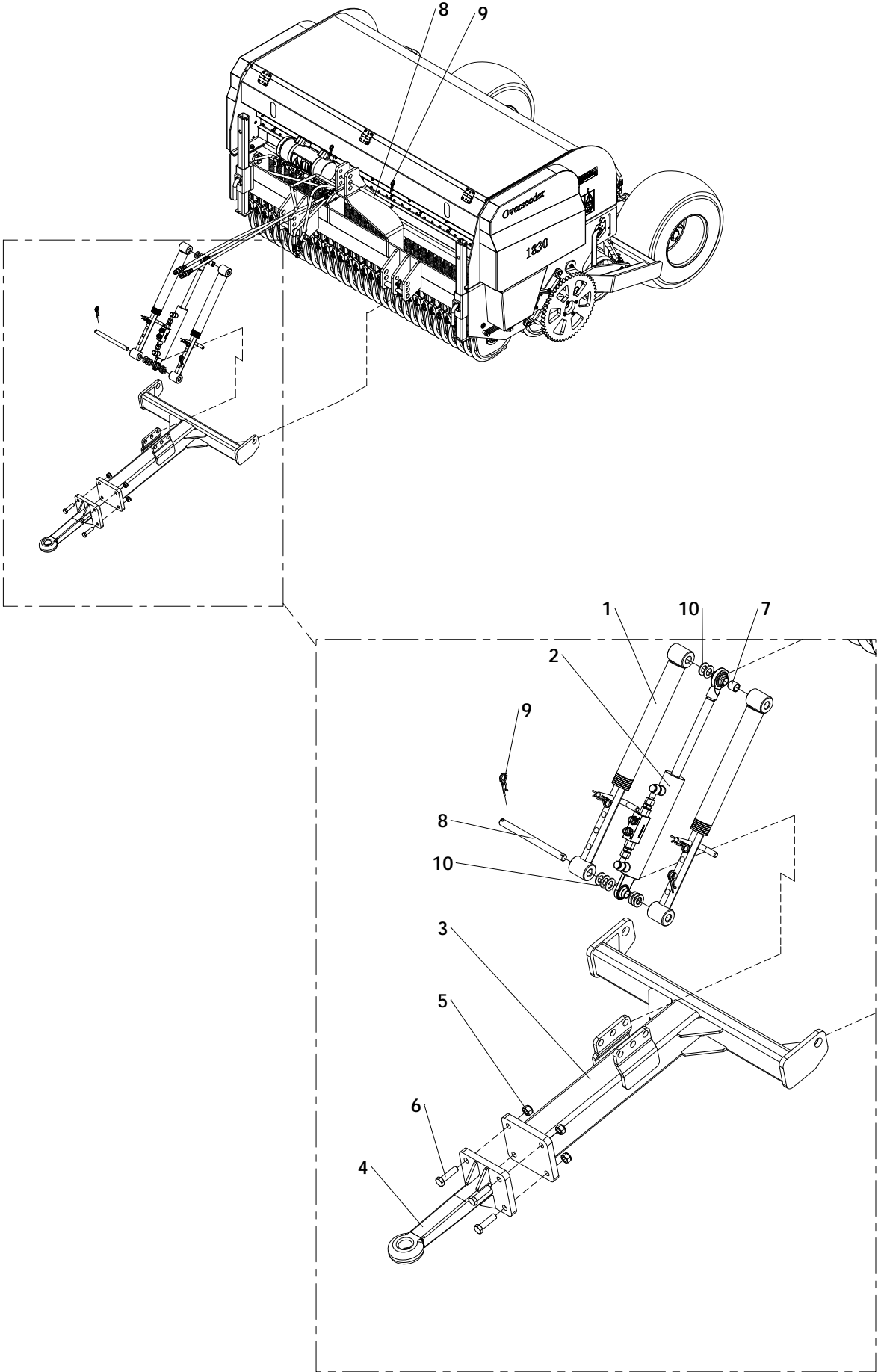
ITEM	PART NUMBER	DESCRIPTION	REMARKS	QUA
1	418.201.340	Shaft swingarm		1
2	430.150.170	Chain wheel 06B 12Z		1
3	430.200.200	Chainwheel 1ste gearaxle		1
4	442.200.152	Bearing bush swingarm		2
5	444.051.000	Guide plate swingarm		1
6	444.250.600	Chain tensioner		1
7	466.155.000	Frame swingarm		1
8	468.204.202	Drive wheel		1
9	474.251.400	Wheel hub		1
10	631.091.114	Chain 3/8" Simplex 117 Shackles		1
11	638.090.090	Chain connector		1
12	713.250.150	Bearing 6205 2RS		2
13	802.080.400	Bolt M8 x 40 - ISO 4014		1
14	802.120.450	Bolt M12 x 45 - ISO 4014		1
15	804.060.250	Bolt M6 x 25 - ISO 4017		1
16	816.060.200	Bolt M6 x 20 - DIN 7991		4
17	826.060.060	Nut M6 - DIN 934		1
18	826.120.120	Nut M12 - DIN 934		1
19	830.120.120	Self Lock Nut M12 - ISO 10511		1
20	844.100.100	Wheel nut M10x1.25		4
21	864.240.044	Washer M24 - ISO 7089		2
22	870.025.120	Circlip d=25 - DIN 471		2
23	878.060.260	Roll Pin 6 x 26 - ISO 8752		1
24	878.060.700	Roll Pin 6 x 70 - ISO 8752		1



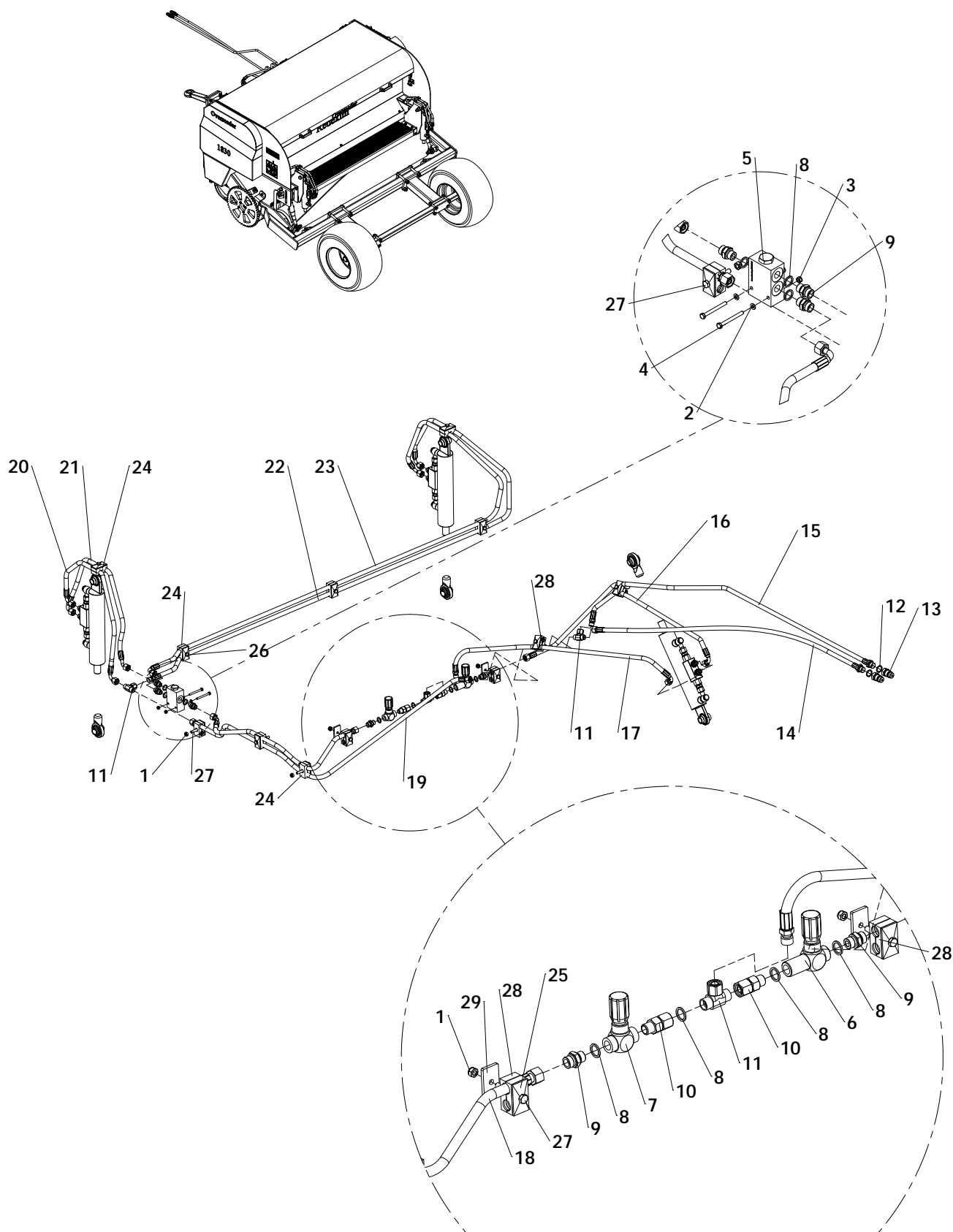
ITEM	PART NUMBER	DESCRIPTION	REMARKS	QUA OS1430	QUA OS1830	QUA OS230
1	492.502.800	Weight 20kg	Max.	26	44	60
2	494.126.020	Ballast frame Overseeder 1430	OS1430	1	0	0
	494.167.017	Ballast frame Overseeder 1830	OS1830	0	1	0
	494.209.020	Ballast frame Overseeder 2230	OS2230	0	0	1
3	804.120.400	Bolt M12 x 40 - ISO 4017		12	12	10
4	830.120.120	Self Lock Nut M12 - ISO 10511		16	16	14
5	864.120.030	Washer M12 - ISO 7089		6	6	6
6	830.160.160	Self Lock Nut M16 - ISO 10511		10	10	8
7	402.170.080	Ring		5	5	4
8	416.164.600	Threaded rod M16x460	OS1430	2	0	0
	416.167.200	Threaded rod M16x720	OS1830	0	2	0
	416.169.200	Threaded rod M16x920	OS2230	0	0	2
9	416.161.200	Threaded rod M16x120	OS1430	2	0	0
	416.163.700	Threaded rod M16x370	OS1830	0	2	0
	416.165.300	Threaded rod M16x530	OS2230	0	0	2
10	468.101.700	Ballast bracket		3	3	2
11	416.163.700	Threaded rod M16x370		1	1	0
	222.140.000	Weight kit Overseeder 1430				
	222.180.000	Weight kit Overseeder 1830				
	222.220.000	Weight kit Overseeder 2230				



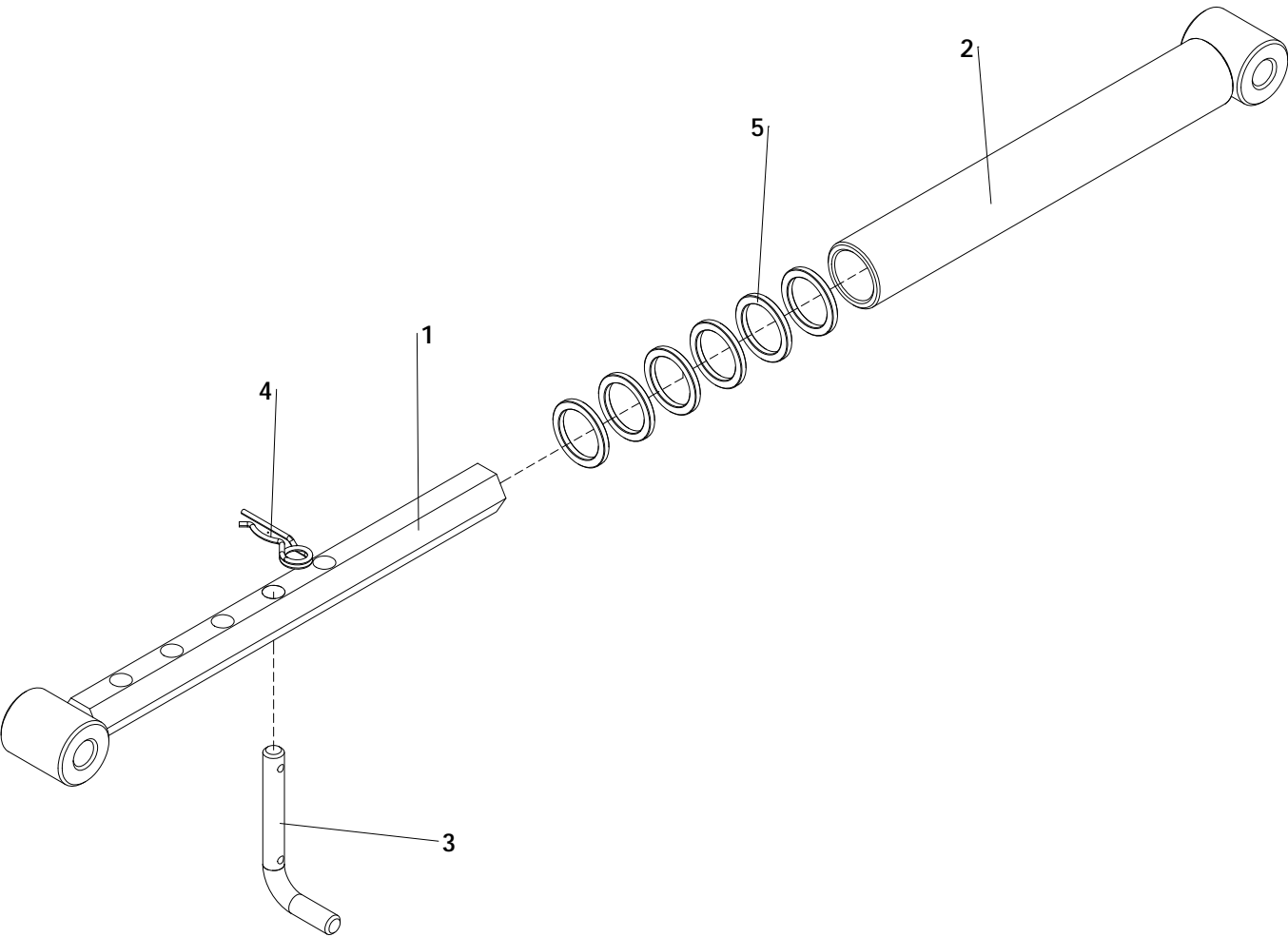
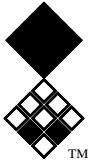
ITEM	PART NUMBER	DESCRIPTION	REMARKS	QUA OS1430	QUA OS1830	QUA OS2230
1	547.150.150	Hose clamp double 15mm		4	4	4
2	547.070.510	Cover plate hose clamp 2x15 - 2x18		2	2	2
3	802.080.500	Bolt M8 x 50 - ISO 4014		2	2	2
4	844.160.160	Wheel Nut M16		10	10	10
5	802.160.100	Bolt M16 x 90 - ISO 4014		8	8	8
6	830.160.160	Self Lock Nut M16 - ISO 10511		8	8	8
7	830.200.200	Self Lock Nut M20 - ISO 10511		8	8	8
8	802.201.400	Bolt M20 x 140 - ISO 4014		8	8	8
9	511.660.305	Wheel 26x12 inch complete		2	2	2
10	462.140.375	Axle spacer		2	2	2
11	468.152.004	Mounting plate		2	2	2
12	519.050.915	Wheel shaft 50x50 L=1500	OS1830 + OS2230	0	1	1
	494.117.017	Wheel shaft 50x50 L=1100	OS1430	1	0	0
13	464.102.000	Clamp strip		2	2	2
14	494.173.067	Bogy frame Overseeder 1430	OS1430	1	0	0
	494.212.099	Bogy frame Overseeder 1830	OS1830	0	1	0
	494.257.067	Bogy frame Overseeder 2230	OS2230	0	0	1
15	406.200.230	Distance bush Ø28 / Ø20 L=14,7		4	4	4
16	470.063.450	Cilinder support left		1	1	1
17	470.063.452	Cilinder support right		1	1	1
18	521.191.120	Top Link Pin		2	2	2
19	523.030.750	R-Clip Round 3, DIN 11024		2	2	2
20	804.120.250	Bolt M12 x 25 - ISO 4017		10	10	10
21	808.191.270	Hex Bolt 0.75"-16x5" UNF - ANSI B18.2.1		2	2	2
22	830.080.080	Self Lock Nut M8 - ISO 10511		2	2	2
23	830.120.120	Self Lock Nut M12 - ISO 10511		10	10	10
24	840.190.230	SL Nut 3/4"-16 UNF		2	2	2
25	864.200.030	Washer M20 - ISO 7089		2	2	2
	222.140.002	Double Disc Overseeder 1430 Bogy kit				
	222.180.002	Double Disc Overseeder 1830 Bogy kit				
	222.220.002	Double Disc Overseeder 2230 Bogy kit				



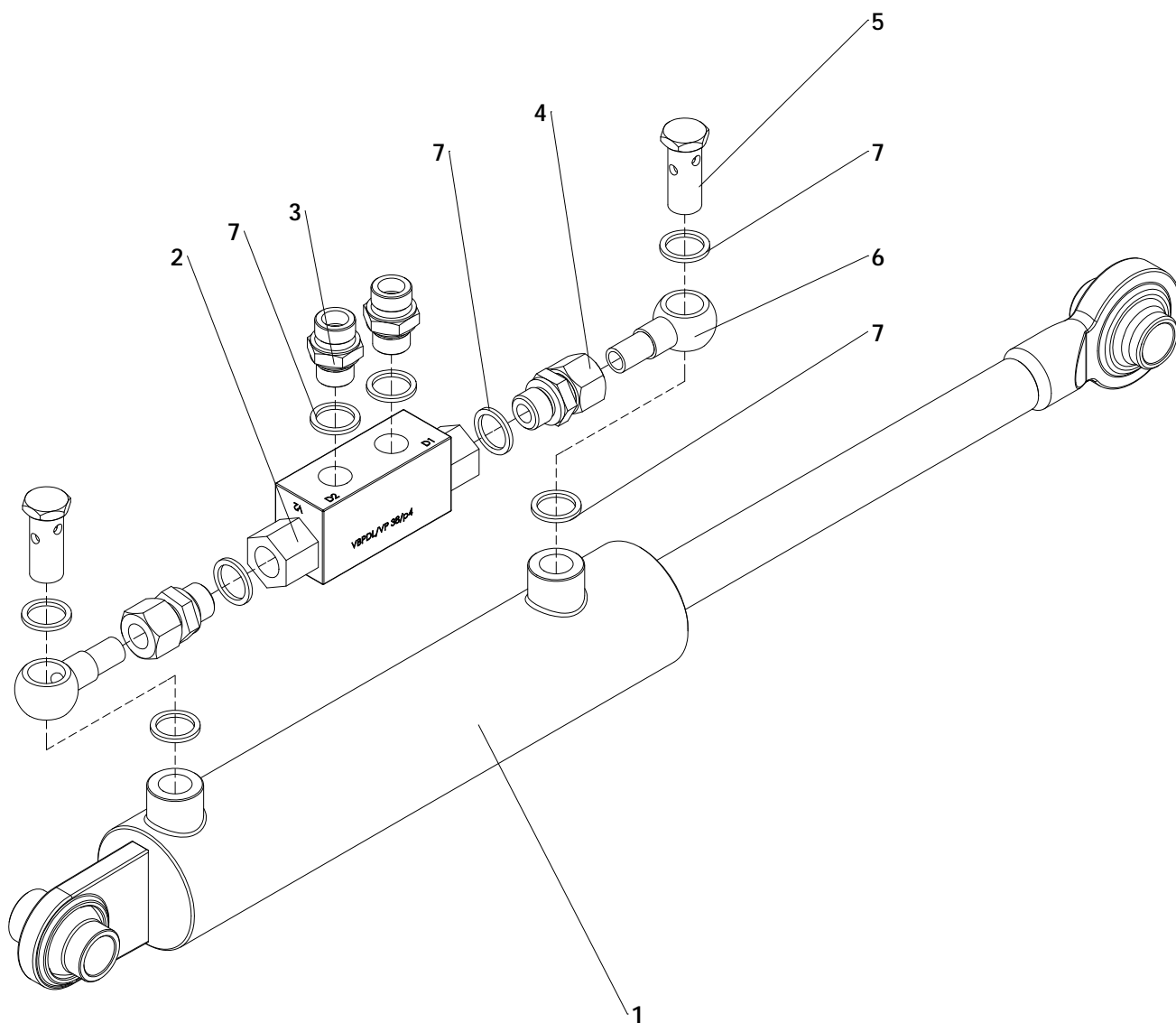
ITEM	PART NUMBER	DESCRIPTION	REMARKS	QUA OS1430	QUA OS1830	QUA OS2230
1		Block cylinder assembly	Page 17	2	2	2
2		Cylinder assembly	Page 18	3	3	3
3	462.217.810	Drawbar Bogy		1	1	1
4	470.203.900	Towing hitch		1	1	1
5	830.160.160	Self Lock Nut M16 - ISO 10511		4	4	4
6	802.160.600	Bolt M16 x 60 - ISO 4014		4	4	4
7	406.190.230	Distance bush Ø25 / Ø19.5 L=23		1	1	1
8	414.192.500	Link pin		2	2	2
9	523.030.750	R-Clip Round 3, DIN 11024		4	4	4
10	864.200.030	Washer M20 - ISO 7089		8	8	8



ITEM	PART NUMBER	DESCRIPTION	REMARKS	QUA OS1430	QUA OS1830	QUA OS2230
1	830.080.080	Self Lock Nut M8 - ISO 10511		6	6	6
2	864.060.030	Washer M6 - ISO 7089		2	2	2
3	830.060.060	Self Lock Nut M6 - ISO 10511		2	2	2
4	802.060.600	Bolt M6 x 60 - ISO 4014		2	2	2
5	536.350.930	Flow divider CP3401001 A06		1	1	1
6	536.300.500	Flow reducer 3/8" FPU05001		1	1	1
7	536.300.502	Flow reducer 3/8" FPB05001		1	1	1
8	874.170.020	Copper washer 3_8		7	7	7
9	544.170.120	Nipple BSP 3_8" x pipe 12 (M18)		5	5	5
10	543.170.122	Joint Connector Straight 3/8" x Ø12 Prem.		2	2	2
11	544.124.126	T_-Connector PM, Pipe 12-M18		3	3	3
12	874.210.020	Copper washer 1_2		2	2	2
13	545.210.800	Quick connector male 1/2"		2	2	2
14	541.173.000	Hose NSK10-3/8" TL=3000 PGLO1018 +PN108		1	1	1
15	541.173.000	Hose NSK10-3/8" TL=3000 PGLO1018 +PN108		1	1	1
16	541.170.830	Hose NSK10-3/8" TL=830 PGLO101890 +PR1012		1	1	1
17	541.170.904	Hose NSK10-3/8" TL=900 PGLO101890 +PR1012	OS1430	1	0	0
	541.170.960	Hose NSK10-3/8" TL=960 PGLO101890 +PR1012	OS1830	0	1	0
	541.171.170	Hose NSK10-3/8" TL=1170 PGLO101890 +PR1012	OS2230	0	0	1
18	541.171.390	Hose NSK10-3/8" TL=1390 + PGLO1018 + PGLO101845		1	1	1
19	541.171.450	Hose NSK10-3/8" TL=1450 2xPGLO1018	OS1430	1	0	0
	541.171.660	Hose NSK10-3/8" TL=1660 2xPGLO1018	OS1830 + OS2230	0	1	1
20	541.170.850	Hose NSK10-3/8" TL=850 2xPGLO101890		1	1	1
21	541.170.890	Hose NSK10-3/8" TL=890 PGLO101845 + PGLO101890		1	1	1
22	541.172.230	Hose NSK10-3/8" TL=2230 PGLO101890 + PR1012	OS1430	1	0	0
	541.172.660	Hose NSK10-3/8" TL=2660 PGLO101890 + PR1012	OS1830	0	1	0
	541.173.070	Hose NSK10-3/8" TL=3070 PGLO101890 + PR1012	OS2230	0	0	1
23	541.172.240	Hose NSK10-3/8" TL=2240 2x PGLO101890	OS1430	1	0	0
	541.172.650	Hose NSK10-3/8" TL=2650 2x PGLO101890	OS1830	0	1	0
	541.173.080	Hose NSK10-3/8" TL=3080 2x PGLO101890	OS2230	0	0	1
24	547.150.150	Hose clamp double 15mm		16	16	16
25	547.070.510	Cover plate hose clamp 2x15 - 2x18		12	12	12
26	802.080.500	Bolt M8 x 50 - ISO 4014		5	5	5
27	802.080.600	Bolt M8 x 60 - ISO 4014		7	7	7
28	547.180.180	Hose clamp double 18mm		8	8	8
29	464.050.304	Spacer		2	2	2



ITEM	PART NUMBER	DESCRIPTION	REMARKS	QUA
1	474.324.500	Hex stop inner	Qua per machine	2
2	478.513.500	Hex stop outer	Qua per machine	2
3	424.151.280	Lock pin	Qua per machine	2
4	523.030.750	R-Clip Round 3, DIN 11024	Qua per machine	2
5	406.390.050	Distance bush Ø51/Ø38.4 L=5	Qua per machine	12



ITEM	PART NUMBER	DESCRIPTION	REMARKS	QUA
1	534.250.490	Hydraulic cylinder 25-50 Stroke=200		1
2	535.401.002	Pressure controlled one way valve 3/8"		1
3	544.170.120	Nipple BSP 3_8" x pipe 12 (M18)		2
4	544.170.122	Straight nipple BSP 3/8" x pipe 12-(M18)		2
5	544.172.400	Cavity Bolt 3/8"		2
6	549.170.043	Banyo connector 3/8" striaght		2
7	874.170.020	Copper washer 3_8		8

